



**MODEL: JT430B**

DESCRIPTION: 4X30 COMPACT SCOPE  
MAGNIFICATION: 4X  
TUBE DIAMETER: 1"  
OBJECTIVE: 30 MM  
LENGTH: 6.9"  
NET WEIGHT (OZ): 9  
EYE RELIEF: 3"  
EXIT PUPIL: 7.6 MM  
FOV (FEET AT 100 YARDS): 26.5  
M.O.A: 1/4  
RETICLE: P4 SNIPER  
FINISH: MATTE BLACK  
LENS COATING: BLUE



**MODEL: JT3940G**

DESCRIPTION: 3-9X40 COMPACT SCOPE  
MAGNIFICATION: 3X-9X  
TUBE DIAMETER: 1"  
OBJECTIVE: 40 MM  
LENGTH: 7.7"  
NET WEIGHT (OZ): 11.4  
EYE RELIEF: 2.3"-2.8"  
EXIT PUPIL: 13.3-4.4 MM  
FOV (FEET AT 100 YARDS): 37.5-12.4  
M.O.A: 1/2  
RETICLE: P4 SNIPER  
FINISH: MATTE BLACK  
LENS COATING: GREEN



**MODEL: JTD3940G**

DESCRIPTION: 3-9X40 DUAL ILL. COMPACT SCOPE  
MAGNIFICATION: 3X-9X  
TUBE DIAMETER: 1"  
OBJECTIVE: 40 MM  
LENGTH: 7.8"  
NET WEIGHT (OZ): 12.1  
EYE RELIEF: 3"  
EXIT PUPIL: 13.3-4.4 MM  
FOV (FEET AT 100 YARDS): 37.5-12.4  
M.O.A: 1/2  
RETICLE: P4 SNIPER  
FINISH: MATTE BLACK  
LENS COATING: GREEN



**MODEL: JTDX3940G**

DESCRIPTION: 3-9X40 DUAL ILL. RUBBER ARMORED SCOPE W/BDC  
MAGNIFICATION: 3X-9X  
TUBE DIAMETER: 30 MM  
OBJECTIVE: 40 MM  
LENGTH: 8"  
NET WEIGHT (OZ): 17.5  
EYE RELIEF: 3"  
EXIT PUPIL: 13.3-4.4 MM  
FOV (FEET AT 100 YARDS): 37.5-12.4  
M.O.A: 2/3  
RETICLE: P4 SNIPER  
FINISH: RUBBER COATED  
LENS COATING: GREEN





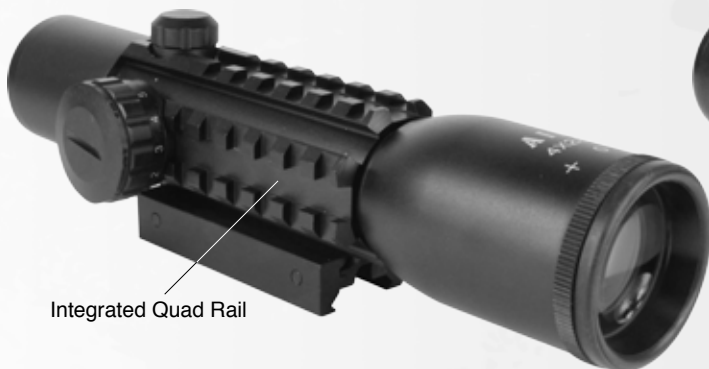
**MODEL: JTDNX3940G**

DESCRIPTION: 3-9X40 DUAL ILL. RUBBER ARMORED SCOPE  
 MAGNIFICATION: 3X-9X  
 TUBE DIAMETER: 30 MM  
 OBJECTIVE: 40 MM  
 LENGTH: 6.9"  
 NET WEIGHT (OZ): 9  
 EYE RELIEF: 3"  
 EXIT PUPIL: 7.6 MM  
 FOV (FEET AT 100 YARDS): 26.5  
 M.O.A.: 1/4  
 RETICLE: P4 SNIPER  
 FINISH: RUBBER COATED  
 LENS COATING: GREEN



**MODEL: JTP3940B**

DESCRIPTION: 3-9X40 AO COMPACT SCOPE  
 MAGNIFICATION: 3X-9X  
 TUBE DIAMETER: 1"  
 OBJECTIVE: 40 MM  
 LENGTH: 10"  
 NET WEIGHT (OZ): 17.4  
 EYE RELIEF: 3.5"  
 EXIT PUPIL: 13.3-4.4 MM  
 FOV (FEET AT 100 YARDS): 37.5-12.4  
 M.O.A.: 1/4  
 RETICLE: P4 SNIPER  
 FINISH: MATTE BLACK  
 LENS COATING: BLUE



Integrated Quad Rail

**MODEL: JTDQ428B**

DESCRIPTION: 4X28 DUAL ILL. QUAD RAIL SCOPE  
 MAGNIFICATION: 4X  
 TUBE DIAMETER: 1"  
 OBJECTIVE: 28 MM  
 LENGTH: 8.5"  
 NET WEIGHT (OZ): 12.5  
 EYE RELIEF: 3.2"  
 EXIT PUPIL: 7 MM  
 FOV (FEET AT 100 YARDS): 28  
 M.O.A.: 1/4  
 RETICLE: MIL-DOT  
 FINISH: MATTE BLACK  
 LENS COATING: BLUE



**MODEL: JTDX430G**

DESCRIPTION: 4X30 DUAL ILL. RUBBER ARMORED SCOPE  
 MAGNIFICATION: 4X30  
 TUBE DIAMETER: 30 MM  
 OBJECTIVE: 30 MM  
 LENGTH: 7.5"  
 NET WEIGHT (OZ): 12.7  
 EYE RELIEF: 3"  
 EXIT PUPIL: 7.5 MM  
 FOV (FEET AT 100 YARDS): 26.5  
 M.O.A.: 1/2  
 RETICLE: P4 SNIPER  
 FINISH: RUBBER COATED  
 LENS COATING: GREEN



Integrated Fiber Optic Sight



**MODEL: JTDF0432G**

DESCRIPTION: 4X32 TRI-ILL. SCOPE W/FIBER OPTIC SIGHT  
MAGNIFICATION: 4X  
TUBE DIAMETER: 30 MM  
OBJECTIVE: 32 MM  
LENGTH: 6"  
NET WEIGHT (OZ): 16.4  
EYE RELIEF: 3.5"  
EXIT PUPIL: 8 MM  
FOV (FEET AT 100 YARDS): 36.6  
M.O.A: 1/4  
RETICLE: RAPID RANGING  
FINISH: MATTE BLACK  
LENS COATING: GREEN



Integrated Rail



**MODEL: JTDSR432G**

DESCRIPTION: 4X32 TRI-ILL. SCOPE W/FIBER OPTIC SIGHT  
MAGNIFICATION: 4X  
TUBE DIAMETER: 30 MM  
OBJECTIVE: 32 MM  
LENGTH: 6"  
NET WEIGHT (OZ): 11.4  
EYE RELIEF: 3.5"  
EXIT PUPIL: 8 MM  
FOV (FEET AT 100 YARDS): 36.6  
M.O.A: 1/4  
RETICLE: RAPID RANGING  
FINISH: MATTE BLACK  
LENS COATING: GREEN



**MODEL: JSG2520G**

DESCRIPTION: 2.5X20 SHOTGUN SCOPE  
MAGNIFICATION: 2.5X  
TUBE DIAMETER: 1"  
OBJECTIVE: 20 MM  
LENGTH: 10.7"  
NET WEIGHT (OZ): 11.5  
EYE RELIEF: 4"  
EXIT PUPIL: 8 MM  
FOV (FEET AT 100 YARDS): 26.2  
M.O.A: 1/2  
RETICLE: CIRCLE  
FINISH: MATTE BLACK  
LENS COATING: GREEN



Rings Included

**MODELS: JTM432B (MIL-DOT)  
JTR432B (RANGEFINDER)**

DESCRIPTION: 4X32 COMPACT SCOPE  
MAGNIFICATION: 4X  
TUBE DIAMETER: 1"  
OBJECTIVE: 32 MM  
LENGTH: 7.75"  
NET WEIGHT (OZ): 11  
EYE RELIEF: 3"  
EXIT PUPIL: 8 MM  
FOV (FEET AT 100 YARDS): 36.6  
M.O.A: 1/4  
FINISH: MATTE BLACK  
LENS COATING: BLUE





**INCLUDES:**  
TACTICAL 30MM CANTILEVER SCOPE MOUNT



**MODEL:** JTM R1  
**DESCRIPTION:** 1.5-4X30 DUAL. ILL. CQB W/LOCKING TURRETS  
**MAGNIFICATION:** 1.5X-4X  
**TUBE DIAMETER:** 30MM  
**OBJECTIVE:** 30 MM  
**LENGTH:** 10.75  
**NET WEIGHT (OZ):** 21  
**EYE RELIEF:** 4"-5"  
**EXIT PUPIL:** 20-7.5 MM  
**FOV (FEET AT 100 YARDS):** 85-25  
**M.O.A:** 1/2  
**RETICLE:** MIL-DOT  
**FINISH:** MATTE BLACK  
**LENS COATING:** GREEN



Integrated Rails



Integrated Quick Release  
Weaver Style Mount

**MODEL:** JTD R432G  
**DESCRIPTION:** 4X32 TRI-ILL. SCOPE W/FIBER OPTIC SIGHT  
**MAGNIFICATION:** 4X  
**TUBE DIAMETER:** 30 MM  
**OBJECTIVE:** 32 MM  
**LENGTH:** 6"  
**NET WEIGHT (OZ):** 17  
**EYE RELIEF:** 3.5"  
**EXIT PUPIL:** 8 MM  
**FOV (FEET AT 100 YARDS):** 36.6  
**M.O.A:** 1/4  
**RETICLE:** RAPID RANGING  
**FINISH:** MATTE BLACK  
**LENS COATING:** GREEN



Integrated Quick Release  
Weaver Style Mount

**MODEL:** JSDG15532G  
**DESCRIPTION:** 1.5-5X32 DUAL ILL. SCOPE W/GREEN LASER  
**MAGNIFICATION:** 1.5X-5X  
**TUBE DIAMETER:** 30 MM  
**OBJECTIVE:** 32 MM  
**LENGTH:** 8.25"  
**NET WEIGHT (OZ):** 22.4  
**EYE RELIEF:** 3.4"-4.5"  
**EXIT PUPIL:** 21.3-6.4 MM  
**FOV (FEET AT 100 YARDS):** 71-21  
**M.O.A:** 1/2  
**RETICLE:** DUPLEX CROSSHAIR  
**FINISH:** MATTE BLACK  
**LENS COATING:** GREEN



Integrated Quick Release  
Weaver Style Mount

**MODEL:** JDG251040G  
**DESCRIPTION:** 2.5-10X40 DUAL ILL. SCOPE W/GREEN LASER  
**MAGNIFICATION:** 2.5X-10X  
**TUBE DIAMETER:** 1"  
**OBJECTIVE:** 40 MM  
**LENGTH:** 8.75"  
**NET WEIGHT (OZ):** 22.9  
**EYE RELIEF:** 3.3"-4.7"  
**EXIT PUPIL:** 16-4.0 MM  
**FOV (FEET AT 100 YARDS):** 32.5-8.9  
**M.O.A:** 1/2  
**RETICLE:** MIL-DOT  
**FINISH:** MATTE BLACK  
**LENS COATING:** GREEN







Integrated Quick Release  
Weaver Style Mount

**MODELS:** JTSDP251040G (P4 SNIPER)  
JTSDR251040G (RANGEFINDER)  
JTSDM251040G (MIL-DOT)

**DESCRIPTION:** 2.5-10X40 DUAL ILL. SCOPE W/CUT SUNSHADE & BDC  
**MAGNIFICATION:** 2.5X-10X  
**TUBE DIAMETER:** 1"  
**OBJECTIVE:** 40 MM  
**LENGTH:** 8.25"  
**NET WEIGHT (OZ):** 16.8  
**EYE RELIEF:** 3"  
**EXIT PUPIL:** 16-4.0 MM  
**FOV (FEET AT 100 YARDS):** 32.5-8.9  
**M.O.A:** 1/4 W/BDC FOR .223  
**FINISH:** MATTE BLACK  
**LENS COATING:** GREEN



Integrated Quick Release  
Weaver Style Mount

**MODELS:** JTSDP3940G (P4 SNIPER)  
JTSDR3940G (RANGEFINDER)  
JTSDM3940G (MIL-DOT)

**DESCRIPTION:** 3-9X40 DUAL ILL. SCOPE W/CUT SUNSHADE & BDC  
**MAGNIFICATION:** 3X-9X  
**TUBE DIAMETER:** 1"  
**OBJECTIVE:** 40 MM  
**LENGTH:** 8.25"  
**NET WEIGHT (OZ):** 17.2  
**EYE RELIEF:** 3"  
**EXIT PUPIL:** 13.3-4.4 MM  
**FOV (FEET AT 100 YARDS):** 37.5-12.4  
**M.O.A:** 1/4 W/BDC FOR .223  
**FINISH:** MATTE BLACK  
**LENS COATING:** GREEN



Integrated Quick Release  
Weaver Style Mount

**MODELS:** JTXSDM3942G (MIL-DOT)  
JTXSDR3942G (RANGEFINDER)

**DESCRIPTION:** 3-9X42 DUAL ILL. RUBBER ARMORED SCOPE/BDC  
**MAGNIFICATION:** 3X-9X  
**TUBE DIAMETER:** 30 MM  
**OBJECTIVE:** 42 MM  
**LENGTH:** 9.75"  
**NET WEIGHT (OZ):** 21.5  
**EYE RELIEF:** 3"  
**EXIT PUPIL:** 14-4.7 MM  
**FOV (FEET AT 100 YARDS):** 37.6-12.6  
**M.O.A:** 1/4 W/BDC FOR .223  
**FINISH:** RUBBER COATED  
**LENS COATING:** GREEN





**MODELS: JDD31250G (DOT)**

**JDR31250G (RANGEFINDER)**

**JDM31250G (MIL-DOT)**

**DESCRIPTION:** 3-12X50 DUAL ILL. EURO STYLE SCOPE  
**MAGNIFICATION:** 3X-12X  
**TUBE DIAMETER:** 30 MM  
**OBJECTIVE:** 50 MM  
**LENGTH:** 13"  
**NET WEIGHT (OZ):** 24.3  
**EYE RELIEF:** 2.4"-3.2"  
**EXIT PUPIL:** 16.7-4.2 MM  
**FOV (FEET AT 100 YARDS):** 33.5-7.5  
**M.O.A.:** 1/8  
**FINISH:** MATTE BLACK  
**LENS COATING:** GREEN



**MODEL: JERS31250G**

**DESCRIPTION:** 3-12X50 DUAL ILL. EURO STYLE SCOPE  
**MAGNIFICATION:** 3X-12X  
**TUBE DIAMETER:** 30 MM  
**OBJECTIVE:** 50 MM  
**LENGTH:** 13"  
**NET WEIGHT (OZ):** 24.3  
**EYE RELIEF:** 2.4"-3.2"  
**EXIT PUPIL:** 16.7-4.2 MM  
**FOV (FEET AT 100 YARDS):** 33.5-7.5  
**M.O.A.:** 1/8  
**RETICLE:** RANGEFINDER  
**FINISH:** SILVER  
**LENS COATING:** GREEN



**MODEL: JDLR41650G**

**DESCRIPTION:** 4-16X50 AOE DUAL ILL. RIFLE SCOPE  
**MAGNIFICATION:** 4X-16X  
**TUBE DIAMETER:** 1"  
**OBJECTIVE:** 50 MM  
**LENGTH:** 15.75"  
**NET WEIGHT (OZ):** 27.5  
**EYE RELIEF:** 3.2"-3.6"  
**EXIT PUPIL:** 12.5-3.1 MM  
**FOV (FEET AT 100 YARDS):** 25.9-6.2  
**M.O.A.:** 1/8  
**RETICLE:** RANGEFINDER  
**FINISH:** MATTE BLACK  
**LENS COATING:** GREEN



**MODEL: JFI62442G**

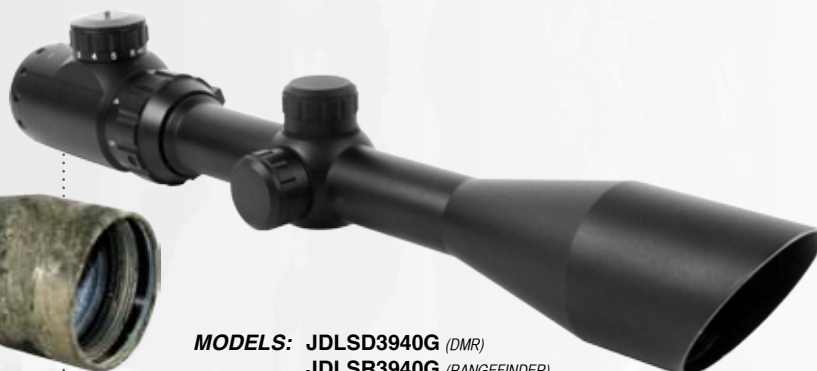
**DESCRIPTION:** 6-24X42 ILL. FIRST FOCAL PLANE SCOPE  
**MAGNIFICATION:** 6X-24X  
**TUBE DIAMETER:** 30 MM  
**OBJECTIVE:** 42 MM  
**LENGTH:** 15.5"  
**NET WEIGHT (OZ):** 32  
**EYE RELIEF:** 3.5"  
**EXIT PUPIL:** 16-4  
**FOV (FEET AT 100 YARDS):** 8.0-2.4  
**M.O.A.:** 1/8  
**RETICLE:** DUPLEX CROSSHAIR  
**FINISH:** MATTE BLACK  
**LENS COATING:** GREEN





**MODEL: JC3940B**

DESCRIPTION: 3-9X40 CAMO COATED SCOPE  
MAGNIFICATION: 3X-9X  
TUBE DIAMETER: 1"  
OBJECTIVE: 40 MM  
LENGTH: 13.2"  
NET WEIGHT (OZ): 16.2  
EYE RELIEF: 3.5"  
EXIT PUPIL: 13.3-4.4 MM  
FOV (FEET AT 100 YARDS): 35.8-12  
M.O.A: 1/4  
RETICLE: DUPLEX CROSSHAIR  
FINISH: CAMO COATED  
LENS COATING: BLUE



**MODELS: JDLSR3940G (DMR)  
JDLSM3940G (MIL-DOT)**

DESCRIPTION: 3-9X40 BLUE/GREEN ILL. SCOPE W/CUT SUNSHADE  
MAGNIFICATION: 3X-9X  
TUBE DIAMETER: 1"  
OBJECTIVE: 40 MM  
LENGTH: 13.5"  
NET WEIGHT (OZ): 20.5  
EYE RELIEF: 3"  
EXIT PUPIL: 13.3-4.4 MM  
FOV (FEET AT 100 YARDS): 37.5-12.4  
M.O.A: 1/4  
FINISH: MATTE BLACK  
LENS COATING: GREEN



**MODEL: JDL3940G**

DESCRIPTION: 3-9X40 DUAL ILL. FULL SIZE SCOPE  
MAGNIFICATION: 3X-9X  
TUBE DIAMETER: 1"  
OBJECTIVE: 40 MM  
LENGTH: 12.75"  
NET WEIGHT (OZ): 19.5  
EYE RELIEF: 2.7"-3.3"  
EXIT PUPIL: 13.3-4.4 MM  
FOV (FEET AT 100 YARDS): 37.5-12.4  
M.O.A: 1/4  
RETICLE: P4 SNIPER  
FINISH: MATTE BLACK  
LENS COATING: GREEN



**MODEL: JDL3950G**

DESCRIPTION: 3-9X50 DUAL ILL. FULL SIZE SCOPE  
MAGNIFICATION: 3X-9X  
TUBE DIAMETER: 1"  
OBJECTIVE: 50 MM  
LENGTH: 13"  
NET WEIGHT (OZ): 22.8  
EYE RELIEF: 2.8"-3.4"  
EXIT PUPIL: 16.7-5.6 MM  
FOV (FEET AT 100 YARDS): 34.6-13.6  
M.O.A: 1/4  
RETICLE: P4 SNIPER  
FINISH: MATTE BLACK  
LENS COATING: GREEN



**MODEL: JDLX3940R**

DESCRIPTION: 3-9X50 DUAL ILL. RUBBER ARMORED SCOPE  
MAGNIFICATION: 3X-9X  
TUBE DIAMETER: 30 MM  
OBJECTIVE: 40 MM  
LENGTH: 12.5"  
NET WEIGHT (OZ): 20.6  
EYE RELIEF: 2.7"-3.2"  
EXIT PUPIL: 13.3-4.4 MM  
FOV (FEET AT 100 YARDS): 36.6-13.6  
M.O.A: 1/4  
RETICLE: MIL-DOT  
FINISH: RUBBER COATED  
LENS COATING: RUBY







**MODEL: JLS3940G**

DESCRIPTION: 3-9X40 FULL SIZE SCOPE W/  
FLIP UP LENS

MAGNIFICATION: 3X-9X  
TUBE DIAMETER: 1"  
OBJECTIVE: 40 MM  
LENGTH: 12.25"  
NET WEIGHT (OZ): 15.6  
EYE RELIEF: 2.7"-3.3"  
EXIT PUPIL: 13.3-4.4 MM  
FOV (FEET AT 100 YARDS): 36.6-13.6  
M.O.A: 1/4  
RETICLE: P4 SNIPER  
FINISH: SILVER  
LENS COATING: GREEN



**MODEL: JLB3940G**

DESCRIPTION: 3-9X40 FULL SIZE SCOPE  
W/FLIP UP LENS

MAGNIFICATION: 3X-9X  
TUBE DIAMETER: 1"  
OBJECTIVE: 40 MM  
LENGTH: 12.75"  
NET WEIGHT (OZ): 16.2  
EYE RELIEF: 2.7"-3.3"  
EXIT PUPIL: 13.3-4.4 MM  
FOV (FEET AT 100 YARDS): 36.6-13.6  
M.O.A: 1/4  
RETICLE: P4 SNIPER  
FINISH: MATTE BLACK  
LENS COATING: GREEN



**MODEL: J LX3940G**

DESCRIPTION: 3-9X40 RUBBER ARMORED SCOPE

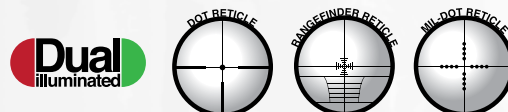
MAGNIFICATION: 3X-9X  
TUBE DIAMETER: 30 MM  
OBJECTIVE: 40 MM  
LENGTH: 12.5"  
NET WEIGHT (OZ): 17.9  
EYE RELIEF: 2.5"-2.8"  
EXIT PUPIL: 13.3-4.4 MM  
FOV (FEET AT 100 YARDS): 36.6-13.6  
M.O.A: 1/4  
RETICLE: P4 SNIPER  
FINISH: RUBBER COATED  
LENS COATING: GREEN





**MODELS:** JDLD62450G (DOT)  
JDLR62450G (RANGEFINDER)  
JDLM62450G (MIL-DOT)

**DESCRIPTION:** 6-24X50 AOE DUAL ILL. RIFLE SCOPE  
**MAGNIFICATION:** 6X-24X  
**TUBE DIAMETER:** 1"  
**OBJECTIVE:** 50 MM  
**LENGTH:** 16.5"  
**NET WEIGHT (OZ):** 28.4  
**EYE RELIEF:** 3.2"-3.6"  
**EXIT PUPIL:** 8.3-2.1 MM  
**FOV (FEET AT 100 YARDS):** 19.2-4.3  
**M.O.A:** 1/4  
**FINISH:** MATTE BLACK  
**LENS COATING:** GREEN



**MODEL:** JDLM41650G

**DESCRIPTION:** 4-16X50 AOE DUAL ILL. RIFLE SCOPE  
**MAGNIFICATION:** 4X-16X  
**TUBE DIAMETER:** 1"  
**OBJECTIVE:** 50 MM  
**LENGTH:** 15.75"  
**NET WEIGHT (OZ):** 27.5  
**EYE RELIEF:** 3.2"-3.6"  
**EXIT PUPIL:** 12.5-3.1 MM  
**FOV (FEET AT 100 YARDS):** 25.9-6.2  
**M.O.A:** 1/8  
**RETICLE:** MIL-DOT  
**FINISH:** MATTE BLACK  
**LENS COATING:** GREEN



**MODEL:** JDLR104050G

**DESCRIPTION:** 10-40X50 AOE DUAL ILL. RIFLE SCOPE  
**MAGNIFICATION:** 10X-40X  
**TUBE DIAMETER:** 1"  
**OBJECTIVE:** 50 MM  
**LENGTH:** 16.25"  
**NET WEIGHT (OZ):** 27.5  
**EYE RELIEF:** 3.2"-3.6"  
**EXIT PUPIL:** 5-1.25 MM  
**FOV (FEET AT 100 YARDS):** 9.8-2.7  
**M.O.A:** 1/8  
**RETICLE:** RANGEFINDER  
**FINISH:** MATTE BLACK  
**LENS COATING:** GREEN





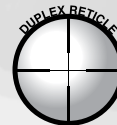
**MODEL: JH2732B**

DESCRIPTION: 2-7X32 PISTOL/SCOUT SCOPE  
MAGNIFICATION: 2X-7X  
TUBE DIAMETER: 1"  
OBJECTIVE: 32 MM  
LENGTH: 10.5"  
NET WEIGHT (OZ): 9  
EYE RELIEF: 8.5"-10.5"  
EXIT PUPIL: 16-4.6 MM  
FOV (FEET AT 100 YARDS): 14-4.6  
M.O.A: 1/4  
RETICLE: DUPLEX CROSSHAIR  
FINISH: MATTE BLACK  
LENS COATING: BLUE



**MODEL: JHI2732B**

DESCRIPTION: DUAL ILL. 2-7X32 PISTOL/SCOUT SCOPE  
MAGNIFICATION: 2X-7X  
TUBE DIAMETER: 1"  
OBJECTIVE: 32 MM  
LENGTH: 10.75"  
NET WEIGHT (OZ): 13.6  
EYE RELIEF: 8.5"-10.5"  
EXIT PUPIL: 16-4.6 MM  
FOV (FEET AT 100 YARDS): 14-4.6  
M.O.A: 1/4  
RETICLE: DUPLEX CROSSHAIR  
FINISH: MATTE BLACK  
LENS COATING: BLUE



**MODEL: JHR2732B**

DESCRIPTION: DUAL ILL. 2-7X32 PISTOL/SCOUT SCOPE  
WITH RED LASER  
MAGNIFICATION: 2X-7X  
TUBE DIAMETER: 1"  
OBJECTIVE: 32 MM  
LENGTH: 10.5"  
NET WEIGHT (OZ): 23.5  
EYE RELIEF: 8.5"-10.5"  
EXIT PUPIL: 16-4.6 MM  
FOV (FEET AT 100 YARDS): 14-4.6  
M.O.A: 1/4  
RETICLE: DUPLEX CROSSHAIR  
FINISH: MATTE BLACK  
LENS COATING: BLUE



**MODEL: JHS2732B**

DESCRIPTION: 2-7X32 PISTOL/SCOUT SCOPE  
MAGNIFICATION: 2X-7X  
TUBE DIAMETER: 1"  
OBJECTIVE: 32 MM  
LENGTH: 10.5"  
NET WEIGHT (OZ): 9  
EYE RELIEF: 8.5"-10.5"  
EXIT PUPIL: 16-4.6 MM  
FOV (FEET AT 100 YARDS): 14-4.6  
M.O.A: 1/4  
RETICLE: DUPLEX CROSSHAIR  
FINISH: SILVER  
LENS COATING: BLUE



**MODEL: JH2742G-M (MIL-DOT)  
JH2742G-R (RANGEFINDER)**

DESCRIPTION: 2-7X42 30MM SCOUT SCOPE  
MAGNIFICATION: 2X-7X  
TUBE DIAMETER: 30MM  
OBJECTIVE: 42 MM  
LENGTH: 11.25"  
NET WEIGHT (OZ): 14.5  
EYE RELIEF: 8.5-10.5"  
EXIT PUPIL: 21-6 MM  
FOV (FEET AT 100 YARDS): 7.4  
M.O.A: 1/4  
FINISH: MATTE BLACK  
LENS COATING: GREEN







**MODEL: RTA-N**

DESCRIPTION: RED DOT WITH AUTO BRIGHTNESS/SUNSHADE  
MAGNIFICATION: 1X  
OBJECTIVE DIAMETER: 23.5 X 16.8  
LENGTH: 2.25"  
NET WEIGHT (OZ): 3  
CLICK VALUE @ 100 YDS: 1 MOA  
DOT SIZE: 3 MOA  
ILLUMINATED: RED  
RETICLE: DOT



**MODEL: RTA-S**

DESCRIPTION: MINI RED DOT WITH ON & OFF SWITCH  
MAGNIFICATION: 1X  
OBJECTIVE DIAMETER: 23.5 X 16.8  
LENGTH: 1.75"  
NET WEIGHT (OZ): 2.5  
CLICK VALUE @ 100 YDS: 1 MOA  
DOT SIZE: 3 MOA  
ILLUMINATED: RED  
RETICLE: DOT



**MODEL: RT4-01**

DESCRIPTION: RED DOT SIGHT WITH 4 RETICLES  
MAGNIFICATION: 1X  
OBJECTIVE DIAMETER: 24.0 X 34.0  
LENGTH: 3"  
NET WEIGHT (OZ): 4.2  
CLICK VALUE @ 100 YDS: 1 MOA  
DOT SIZE: 3 MOA  
ILLUMINATED: RED  
RETICLE: STAR/CROSS/DOT/BULLSEYE



**MODEL: RT4-02**

DESCRIPTION: RED DOT SIGHT WITH AUTO BRIGHTNESS  
MAGNIFICATION: 1X  
OBJECTIVE DIAMETER: 24.0 X 34.0  
LENGTH: 3"  
NET WEIGHT (OZ): 4.2  
CLICK VALUE @ 100 YDS: 1 MOA  
DOT SIZE: 3 MOA  
ILLUMINATED: RED  
RETICLE: STAR/CROSS/DOT/BULLSEYE

**MODEL: RT4-03**

DESCRIPTION: DUAL ILL. SIGHT WITH 4 RETICLES  
 MAGNIFICATION: 1X  
 OBJECTIVE DIAMETER: 24.0 X 34.0  
 LENGTH: 3"  
 NET WEIGHT (OZ): 4.2  
 CLICK VALUE @ 100 YDS: 1 MOA  
 DOT SIZE: 3 MOA  
 ILLUMINATED: RED & GREEN  
 RETICLE: STAR/CROSS/DOT/BULLSEYE

**MODEL: RTC130**

DESCRIPTION: 1X30 DUAL ILL. 3 DOT RETICLE FOR CROSSBOW  
 MAGNIFICATION: 1X  
 OBJECTIVE DIAMETER: 30MM  
 LENGTH: 4"  
 NET WEIGHT (OZ): 7.7  
 CLICK VALUE @ 100 YDS: 1MOA  
 DOT SIZE: 3 MOA  
 ILLUMINATED: RED & GREEN  
 FEATURES: EACH DOT SEPARATION IS 10-12 YARDS

**MODEL: RTD25**

DESCRIPTION: 1X25 DUAL ILL. SIGHT W/INTERCHANGABLE WEAVER/DOVETAIL BASE  
 MAGNIFICATION: 1X  
 OBJECTIVE DIAMETER: 25 MM  
 LENGTH: 4"  
 NET WEIGHT (OZ): 4.1  
 CLICK VALUE @ 100 YDS: 1 MOA  
 DOT SIZE: 5 MOA  
 ILLUMINATED: RED & GREEN  
 FEATURES: INTERCHANGEABLE WEAVER-DOVETAIL BASE  
 RETICLE: DOT

**MODEL: RTD45**

DESCRIPTION: 1X45 DUAL ILL. SIGHT W/INTERCHANGABLE WEAVER/DOVETAIL BASE  
 MAGNIFICATION: 1X  
 OBJECTIVE DIAMETER: 45 MM  
 LENGTH: 5"  
 NET WEIGHT (OZ): 10.4  
 CLICK VALUE @ 100 YDS: 1 MOA  
 DOT SIZE: 3 MOA  
 ILLUMINATED: RED & GREEN  
 FEATURES: INTERCHANGEABLE WEAVER-DOVETAIL BASE  
 RETICLE: DOT



**MODEL: RT42W**  
 DESCRIPTION: 1X42 RED DOT SIGHT W/FLIP UP LENS  
 MAGNIFICATION: 1X  
 OBJECTIVE DIAMETER: 42 MM  
 LENGTH: 3.75"  
 NET WEIGHT (OZ): 8.3  
 CLICK VALUE @ 100 YDS: 1 MOA  
 DOT SIZE: 3 MOA  
 ILLUMINATED: RED  
 RETICLE: DOT



**MODEL: RT130W**  
 DESCRIPTION: 1X30 RED DOT SIGHT W/FLIP UP LENS  
 MAGNIFICATION: 1X  
 OBJECTIVE DIAMETER: 30 MM  
 LENGTH: 4.2"  
 NET WEIGHT (OZ): 8  
 CLICK VALUE @ 100 YDS: 1 MOA  
 DOT SIZE: 3 MOA  
 ILLUMINATED: RED  
 RETICLE: DOT



**MODEL: RTD130**  
 DESCRIPTION: 1X30 DUAL ILL. SIGHT W/4 RETICLES  
 MAGNIFICATION: 1X  
 OBJECTIVE DIAMETER: 30 MM  
 LENGTH: 4.75"  
 NET WEIGHT (OZ): 8.3  
 CLICK VALUE @ 100 YDS: 1 MOA  
 DOT SIZE: 3 MOA  
 ILLUMINATED: RED & GREEN  
 RETICLE: STAR/CROSS/DOT/BULLSEYE







**MODEL: RTDW125**

DESCRIPTION: 1X25 DUALL ILL. 4 DIFFERENT  
RETICLES W/ADJ. TURRET

MAGNIFICATION: 1X  
OBJECTIVE DIAMETER: 25MM  
LENGTH: 5.25"  
NET WEIGHT (OZ): 7.8  
CLICK VALUE @ 100 YDS: 1 MOA  
DOT SIZE: 5 MOA  
ILLUMINATED: RED & GREEN  
RETICLE: STAR/CROSS/DOT/BULLSEYE



**MODEL: RTM125**

DESCRIPTION: 1X25 ILLUMINATED RED DOT  
MAGNIFICATION: 1X  
OBJECTIVE DIAMETER: 25MM  
LENGTH: 5.25"  
NET WEIGHT (OZ): 7.8  
CLICK VALUE @ 100 YDS: 1 MOA  
DOT SIZE: 5 MOA  
ILLUMINATED: RED  
RETICLE: DOT



**MODEL: RTMZ30**

DESCRIPTION: 1.5X30 RED DOT SIGHT W/DOUBLER  
MAGNIFICATION: 1.5X  
OBJECTIVE DIAMETER: 30 MM  
LENGTH: 5"  
NET WEIGHT (OZ): 8.5  
CLICK VALUE @ 100 YDS: 1 MOA  
DOT SIZE: 4 MOA  
ILLUMINATED: RED  
RETICLE: DOT



Integrated Quad Rail



**MODEL: RTQ125**

DESCRIPTION: 1X25 DUAL ILLUMINATED RED/GREEN DOT  
W/3 INTEGRAL WEAVER RAILS  
MAGNIFICATION: 1X  
OBJECTIVE DIAMETER: 25 MM  
LENGTH: 5.25"  
NET WEIGHT (OZ): 8.5  
CLICK VALUE @ 100 YDS: 1 MOA  
DOT SIZE: 5 MOA  
ILLUMINATED: RED & GREEN  
RETICLE: DOT



**INCLUDES:**  
Tripod



**MODEL:** SMB226550G  
**DESCRIPTION:** 22-65X60 SPOTTING SCOPE/BLACK  
**MAGNIFICATION:** 22X-65X  
**OBJECTIVE:** 60 MM  
**LENGTH:** 12.5  
**N.W. (OZ):** 33  
**EXIT PUPIL:** 3MM @22X  
**FOV (AT 1000 YDS):** M:35 FT./105M@22X  
**FINISH:** BLACK  
**LENS COATING:** FULLY MULTI-COATED  
**FEATURES:** MAKSUTOV-CASSEGRAIN OPTIC, TWIST-UP EYECUP & TABLE TRIPOD



**INCLUDES:**  
Tripod



**MODEL:** SMG226550G  
**DESCRIPTION:** 22-65X60 SPOTTING SCOPE/GREEN  
**MAGNIFICATION:** 22X-65X  
**OBJECTIVE:** 60 MM  
**LENGTH:** 12.5  
**N.W. (OZ):** 33  
**EXIT PUPIL:** 3MM @22X  
**FOV (AT 1000 YDS):** M:35 FT./105M@22X  
**FINISH:** GREEN  
**LENS COATING:** FULLY MULTI-COATED  
**FEATURES:** MAKSUTOV-CASSEGRAIN OPTIC, & TWIST-UP EYECUP & TABLE TRIPOD



**INCLUDES:**  
Tripod



**MODEL:** SMB309065G  
**DESCRIPTION:** 30-90X65 SPOTTING SCOPE/GREEN  
**MAGNIFICATION:** 30X-90X  
**OBJECTIVE:** 65MM  
**LENGTH:** 10"  
**N.W. (OZ):** 33  
**EXIT PUPIL:** 1.7MM @ 30X  
**FOV (AT 1000 YDS):** M:24 FT./73M@30X  
**FINISH:** BLACK  
**LENS COATING:** FULLY MULTI-COATED  
**FEATURES:** MAKSUTOV-CASSEGRAIN OPTIC, TWIST-UP EYECUP & TABLE TRIPOD



**INCLUDES:**  
Tripod

**NEW**

**MODEL: SMG309065**

**DESCRIPTION:** 30-90X65 SPOTTING SCOPE/GREEN  
**MAGNIFICATION:** 30X-90X  
**OBJECTIVE:** 65 MM  
**LENGTH:** 10"  
**N.W. (OZ):** 33  
**EXIT PUPIL:** 1.7MM @ 30X  
**FOV (AT 1000 YDS):** M:24 FT./73M@30X  
**FINISH:** GREEN  
**LENS COATING:** FULLY MULTI-COATED  
**FEATURES:** MAKSUOV-CASSEGRAIN OPTIC, TWIST-UP EYECUP & TABLE TRIPOD



**INCLUDES:**  
Tripod

**NEW**

**MODEL: SNB206060**

**DESCRIPTION:** 20-60X60 SPOTTING SCOPE W/TRIPOD AND LASER  
**MAGNIFICATION:** 20X-60X  
**OBJECTIVE:** 60 MM  
**LENGTH:** 13"  
**N.W. (OZ):** 34  
**EXIT PUPIL:** 3.00 MM @ 20X  
**FOV (AT 1000 YDS):** 115-50 FEET  
**FINISH:** BLACK  
**LENS COATING:** GREEN



**INCLUDES:**  
Tripod

**MODEL: SSB206060**

**DESCRIPTION:** 20-60X60 SPOTTING SCOPE W/TRIPOD AND LASER  
**MAGNIFICATION:** 20X-60X  
**OBJECTIVE:** 60 MM  
**LENGTH:** 14.75"  
**N.W. (OZ):** 32  
**EXIT PUPIL:** 3.00 MM @ 20X  
**FOV (AT 1000 YDS):** 115-50 FEET  
**FINISH:** BLACK  
**LENS COATING:** GREEN





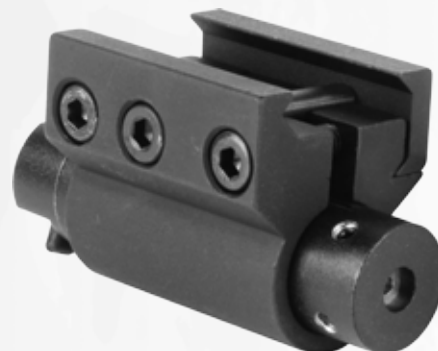
**RED LASER**

**MODEL: LC001**  
**DESCRIPTION:** RIFLE LASER SIGHT  
**POWER/WAVELENGTH:** 635/655NM RED LASER/5mW  
**LENGTH:** 2.25"  
**NET WEIGHT (OZ):** 1.7  
**BATTERY:** LR44  
**OPER. TEMPERATURE:** 14F-113F  
**RANGE:** 500M  
**FEATURES:** BARREL MOUNT/WINDAGE  
 ELEVATION ADJUSTMENT



**RED LASER**

**MODEL: LH001**  
**DESCRIPTION:** PISTOL LASER SIGHT  
**POWER/WAVELENGTH:** 635/655NM RED LASER/5mW  
**LENGTH:** 2.25"  
**NET WEIGHT (OZ):** 0.8  
**BATTERY:** LR44  
**OPER. TEMPERATURE:** 14F-113F  
**RANGE:** 500M  
**FEATURES:** TRIGGER GUARD/WINDAGE  
 ELEVATION ADJUSTMENT



**RED LASER**

**MODEL: LH002**  
**DESCRIPTION:** PISTOL/RIFLE LASER SIGHT  
**POWER/WAVELENGTH:** 635/655NM RED LASER/5mW  
**LENGTH:** 2.25"  
**NET WEIGHT (OZ):** 2  
**BATTERY:** LR44  
**OPER. TEMPERATURE:** 14F-113F  
**RANGE:** 500M  
**FEATURES:** PRESSURE SWITCH/WEAVER  
 STYLE MOUNT



**RED LASER**

**MODEL: LH003**  
**DESCRIPTION:** TACTICAL RED LASER  
**POWER/WAVELENGTH:** 635/655NM RED LASER/5mW  
**LENGTH:** 2.4"  
**NET WEIGHT (OZ):** 3  
**BATTERY:** LR44  
**OPER. TEMPERATURE:** 14F-113F  
**RANGE:** 500M  
**FEATURES:** OPERATES WITH SLIDING  
 ON/OFF SWITCH



**MODEL: LALW**  
**DESCRIPTION:** LASER WIRE PRESSURE SWITCH  
**COMPATABILITY:** LC001, LH001 AND LH002  
**MAX LENGTH:** 31"  
**NET WEIGHT (OZ):** 0.5



**INCLUDES:**  
Pressure Switch

**MODEL: LG001**  
**DESCRIPTION:** PISTOL/RIFLE GREEN LASER  
**POWER/WAVELENGTH:** 635/655NM GREEN LASER/5mW  
**LENGTH:** 4.75"  
**NET WEIGHT (OZ):** 6.8  
**BATTERY:** CR123A  
**OPER. TEMPERATURE:** 14F-113F  
**RANGE:** 500M  
**FEATURES:** WEAVER MOUNT/PRESSURE SWITCH



**MODEL: LG002**  
**DESCRIPTION:** TACTICAL GREEN LASER W/ EXTERNAL ADJUSTMENTS  
**POWER/WAVELENGTH:** 635/655NM GREEN LASER/5mW  
**LENGTH:** 4.75"  
**NET WEIGHT (OZ):** 7.2  
**BATTERY:** CR123A  
**OPER. TEMPERATURE:** 14F-113F  
**RANGE:** 500M  
**FEATURES:** QUICK ADJUSTMENT KNOBS



**INCLUDES:**  
Pressure Switch

**MODEL: LG003**  
**DESCRIPTION:** COMPACT PISTOL/RIFLE GREEN LASER  
**POWER/WAVELENGTH:** 635/655NM GREEN LASER/5mW  
**LENGTH:** 3.25"  
**NET WEIGHT (OZ):** 3.1  
**BATTERY:** CR1/2 AA  
**OPER. TEMPERATURE:** 14F-113F  
**RANGE:** 500M  
**FEATURES:** WEAVER MOUNT/PRESSURE SWITCH





**MODEL: FM90S**  
**DESCRIPTION:** 90 LUMENS FLASHLIGHT W/  
 MOUNT/PRESSURE SWITCH  
**LIGHT BULB:** LED  
**MAX OUTPUT:** 90 LUMENS  
**VOLTAGE:** 3W  
**LENGTH:** 5"  
**NET WEIGHT (OZ):** 4.5  
**BATTERY:** CR123A  
**FEATURES:** WEAVER STYLE MOUNT/  
 PRESSURE SWITCH



**MODEL: FP160D**  
**DESCRIPTION:** 160 LUMENS W/STROBE/MOUNT/  
 PRESSURE SWITCH  
**LIGHT BULB:** U.S.A. MADE CREE P4  
**MAX OUTPUT:** 160 LUMENS  
**VOLTAGE:** 3W  
**LENGTH:** 5.5"  
**NET WEIGHT (OZ):** 8.8  
**BATTERY:** CR123A  
**FEATURES:** STROBE/SOS LIGHT MODE WEAVER  
 STYLE MOUNT/PRESSURE SWITCH



**MODEL: FTG150**  
**DESCRIPTION:** FLASHLIGHT 150 LUMENS W/TACTICAL GRIP/ALUMINUM  
 U.S.A. MADE CREE LED  
**LIGHT BULB:** 150 LUMENS  
**MAX OUTPUT:** 3W  
**VOLTAGE:** 5.25"  
**LENGTH:** 12.7  
**NET WEIGHT (OZ):** CR123A  
**BATTERY:** PUSH BUTTON ON & OFF SWITCH/WEAVER STYLE  
**FEATURES:** MOUNT





**MODEL: FQ150**  
**DESCRIPTION:** 150 LUMENS FLASHLIGHT  
**LIGHT BULB:** U.S.A. MADE CREE LED  
**MAX OUTPUT:** 150 LUMENS  
**VOLTAGE:** 3W  
**LENGTH:** 3.25"  
**NET WEIGHT (OZ):** 4.2  
**BATTERY:** CR123A  
**FEATURES:** SLIDING ON & OFF SWITCH/QUICK  
 RELEASE WEAVER STYLE MOUNT/3  
 COLOR FILTERED LENSES



**DESERT GOLD  
EDITION**



**MODEL: FQ150DG**  
**DESCRIPTION:** 150 LUMENS FLASHLIGHT  
**LIGHT BULB:** U.S.A. MADE CREE LED  
**MAX OUTPUT:** 150 LUMENS  
**VOLTAGE:** 3W  
**LENGTH:** 3.25"  
**NET WEIGHT (OZ):** 4.2  
**BATTERY:** CR123A  
**FEATURES:** SLIDING ON & OFF SWITCH/QUICK  
 RELEASE WEAVER STYLE MOUNT/3  
 COLOR FILTERED LENSES  
**FINISH:** DESERT GOLD



**MODEL: FQ150C**  
**DESCRIPTION:** FLASHLIGHT 150 LUMENS W/QRL COLOR  
 FILTERED LENSES/COMPACT  
**LIGHT BULB:** U.S.A. MADE CREE LED  
**MAX OUTPUT:** 150 LUMENS  
**VOLTAGE:** 1W  
**LENGTH:** 2.75"  
**NET WEIGHT (OZ):** 2.9  
**BATTERY:** CR123A  
**FEATURES:** PUSH BUTTON ON & OFF SWITCH/QUICK  
 RELEASE WEAVER STYLE MOUNT



**MODEL: FQ150SC**  
**DESCRIPTION:** FLASHLIGHT 150 LUMENS W/QRL COLOR  
 FILTERED LENSES/SUB-COMP  
**LIGHT BULB:** U.S.A. MADE CREE LED  
**MAX OUTPUT:** 150 LUMENS  
**VOLTAGE:** 1W  
**LENGTH:** 2.5"  
**NET WEIGHT (OZ):** 2.5  
**BATTERY:** CR123A  
**FEATURES:** PUSH BUTTON ON & OFF SWITCH/QUICK  
 RELEASE WEAVER STYLE MOUNT



**MODEL: LFGC01**  
**DESCRIPTION:** FLASHLIGHT LASER COMBO W/QUICK RELEASE MOUNT  
**POWER/WAVELENGTH:** 635/655NM RED LASER/5mW  
**LENGTH:** 3"  
**NET WEIGHT (OZ):** 3.7  
**BATTERY:** CR123A  
**OPER. TEMPERATURE:** 14F-113F  
**RANGE:** 500M  
**FEATURES:** QUICK RELEASE WEAVER MOUNT



**MODEL: LGFQ01**  
**DESCRIPTION:** FLASHLIGHT/ GREEN LASER  
 COMBO W/QR MOUNT  
**POWER/WAVELENGTH:** 635/655NM GREEN LASER/5mW  
**LENGTH:** 3"  
**NET WEIGHT (OZ):** 3.7  
**BATTERY:** CR123A  
**OPER. TEMPERATURE:** 14F-113F  
**RANGE:** 500M  
**FEATURES:** QUICK RELEASE WEAVER MOUNT/  
 SWITCHING BEZELS



**MODEL: LRFQ01**  
**DESCRIPTION:** FLASHLIGHT/ RED LASER  
 COMBO W/QR MOUNT  
**POWER/WAVELENGTH:** 635/655NM RED LASER/5mW  
**LENGTH:** 3"  
**NET WEIGHT (OZ):** 3.7  
**BATTERY:** CR123A  
**OPER. TEMPERATURE:** 14F-113F  
**RANGE:** 500M  
**FEATURES:** QUICK RELEASE WEAVER  
 MOUNT/SWITCHING BEZELS



**MODEL: CAKB01**  
**DESCRIPTION:** AK 74 BELL SHAPE MUZZLE BRAKE 14X1MM LEFT HAND THREADS  
**LENGTH:** 3.0"  
**NET WEIGHT (OZ):** 5.5  
**COMPATIBILITY:** MOST THREADED AK-74 BARRELS  
**FEATURES:** HEAT TREATED/EROSION RESISTANT/REDUCES CLIMB  
**FINISH:** BLACK OXIDE/ALL STEEL CONSTRUCTION



**MODEL: CAKB02**  
**DESCRIPTION:** AK 74 BELL SHAPE MUZZLE BRAKE/ WITH ADAPTOR (CAKB03)  
**LENGTH:** 3.25"  
**NET WEIGHT (OZ):** 5.3  
**COMPATIBILITY:** FITS MOST AK-74 BARRELS  
**FEATURES:** HEAT TREATED/EROSION RESISTANT/REDUCES CLIMB  
**FINISH:** BLACK OXIDE/ALL STEEL CONSTRUCTION



**MODEL: CARB01**  
**DESCRIPTION:** AR15/M16 MUZZLE BRAKE/SHORT RIGHT HAND THREAD  
**LENGTH:** 1.75"  
**NET WEIGHT (OZ):** 2.1  
**COMPATIBILITY:** AR15/ 223 BORE  
**FEATURES:** HEAT TREATED/EROSION RESISTANT/REDUCES CLIMB  
**FINISH:** BLACK OXIDE/ALL STEEL CONSTRUCTION



**MODEL: CARB02**  
**DESCRIPTION:** AR MUZZLE BRAKE WITH AK STYLE 1/2X28 R/H THREADS  
**LENGTH:** 3.25"  
**NET WEIGHT (OZ):** 5.5  
**COMPATIBILITY:** AR15/ 223 BORE  
**FEATURES:** HEAT TREATED/EROSION RESISTANT/REDUCES CLIMB  
**FINISH:** BLACK OXIDE/ALL STEEL CONSTRUCTION



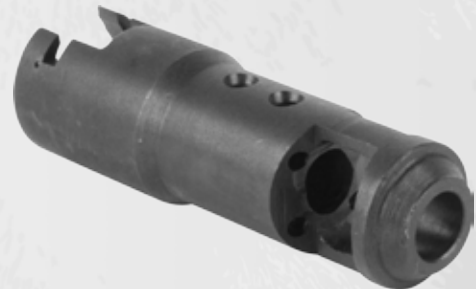
**MODEL: CAKB03**  
**DESCRIPTION:** AK MUZZLE BRAKE ADAPTOR 14X1MM L/H THREADS  
**24X1.5MM R/H THREADS**  
**LENGTH:** 1"  
**NET WEIGHT (OZ):** 1.6  
**COMPATIBILITY:** CAKB02  
**FEATURES:** HEAT TREATED/EROSION RESISTANT  
**FINISH:** BLACK OXIDE/ALL STEEL CONSTRUCTION



**MODEL: CARB03**  
**DESCRIPTION:** AR MUZZLE BRAKE ADAPTOR/ 24X1.5MM R/H THREADS  
**LENGTH:** 0.75"  
**NET WEIGHT (OZ):** 1.6  
**COMPATIBILITY:** CARB02  
**FEATURES:** HEAT TREATED/EROSION RESISTANT  
**FINISH:** BLACK OXIDE/ALL STEEL CONSTRUCTION



**MODEL: PJK002S**  
**DESCRIPTION:** AK MUZZLE BRAKE THREADED 14X1MM LEFT HAND THREADS  
**LENGTH:** 2.75"  
**NET WEIGHT (OZ):** 5.2  
**COMPATIBILITY:** MOST AK BARRELS  
**FEATURES:** HEAT TREATED/REDUCES CLIMB & BARREL WHIP  
**FINISH:** BLACK OXIDE/ALL STEEL CONSTRUCTION



**MODEL: PJK001P**  
**DESCRIPTION:** AK MUZZLE BRAKE/SHORT PIN-ON MUZZLE HOLE  
**LENGTH:** 0.56"  
**NET WEIGHT (OZ):** 3.25"  
**COMPATIBILITY:** 4.7  
**FEATURES:** MOST AK BARRELS  
**FINISH:** HEAT TREATED/REDUCES CLIMB & BARREL WHIP  
**BLACK OXIDE/ALL STEEL CONSTRUCTION**





**MODEL:** PJMN3001B  
**DESCRIPTION:** RUGER MINI-30 MUZZLE BRAKE  
**LENGTH:** 4"  
**NET WEIGHT (OZ):** 3.2  
**COMPATIBILITY:** MOST MINI-30  
**FEATURES:** HEAT TREATED/REDUCES CLIMB  
**FINISH:** BLACK OXIDE/ALL STEEL CONSTRUCTION



**MODEL:** PJMN3001S  
**DESCRIPTION:** RUGER MINI-30 MUZZLE BRAKE/STAINLESS  
**LENGTH:** 4"  
**NET WEIGHT (OZ):** 3.1  
**COMPATIBILITY:** MOST MINI-30  
**FEATURES:** HEAT TREATED/REDUCES CLIMB  
**FINISH:** STAINLESS/ALL STEEL CONSTRUCTION



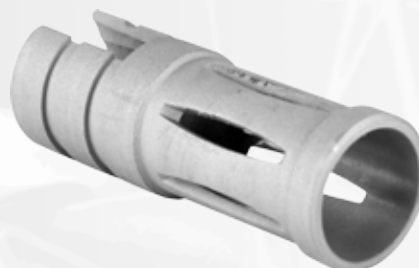
**MODEL:** PJMN1401B  
**DESCRIPTION:** RUGER MINI-14 DOUBLE MUZZLE BRAKE  
**LENGTH:** 4"  
**NET WEIGHT (OZ):** 3  
**COMPATIBILITY:** MOST MINI-14 (NOT FIT SERIAL # ABOVE 195)  
**FEATURES:** HEAT TREATED/REDUCES CLIMB  
**FINISH:** BLACK OXIDE/ALL STEEL CONSTRUCTION



**MODEL:** PJMN1401S  
**DESCRIPTION:** RUGER MINI-14 DOUBLE MUZZLE BRAKE/STAINLESS  
**LENGTH:** 4"  
**NET WEIGHT (OZ):** 2.8  
**COMPATIBILITY:** MOST MINI-14 (NOT FIT SERIAL # ABOVE 195)  
**FEATURES:** HEAT TREATED/REDUCES CLIMB  
**FINISH:** STAINLESS/ALL STEEL CONSTRUCTION



**MODEL:** PJRU01B  
**DESCRIPTION:** RUGER 10/22 BLUE MUZZLE BRAKE/SHORT  
**LENGTH:** 2.5"  
**NET WEIGHT (OZ):** 1.8  
**COMPATIBILITY:** RUGER 10/22  
**FEATURES:** HEAT TREATED/REDUCES CLIMB  
**FINISH:** BLACK OXIDE/ALL STEEL CONSTRUCTION



**MODEL:** PJRU01S  
**DESCRIPTION:** RUGER 10/22 STAINLESS STEEL MUZZLE BRAKE/SHORT  
**LENGTH:** 2.5"  
**NET WEIGHT (OZ):** 1.9  
**COMPATIBILITY:** RUGER 10/22  
**FEATURES:** HEAT TREATED/REDUCES CLIMB  
**FINISH:** STAINLESS/ALL STEEL CONSTRUCTION



**MODEL:** PJRU02B  
**DESCRIPTION:** RUGER 10/22 BLUE MUZZLE BRAKE/LONG  
**LENGTH:** 3.5"  
**NET WEIGHT (OZ):** 2.5  
**COMPATIBILITY:** RUGER 10/22  
**FEATURES:** HEAT TREATED REDUCES CLIMB  
**FINISH:** BLACK OXIDE/ALL STEEL CONSTRUCTION



**MODEL:** PJRU02S  
**DESCRIPTION:** RUGER 10/22 STAINLESS STEEL MUZZLE BRAKE/LONG  
**LENGTH:** 3.5"  
**NET WEIGHT (OZ):** 2.5  
**COMPATIBILITY:** RUGER 10/22  
**FEATURES:** HEAT TREATED/REDUCES CLIMB  
**FINISH:** STAINLESS/ALL STEEL CONSTRUCTION



**MODEL: PJS001P**  
 DESCRIPTION: SKS MUZZLE BRAKE SHORT  
 LENGTH: 2"  
 NET WEIGHT (OZ): 2.8  
 COMPATIBILITY: CHINESE & RUSSIAN SKS MODELS  
 FEATURES: HEAT TREATED/REDUCES CLIMB  
 FINISH: BLACK OXIDE/ALL STEEL CONSTRUCTION



**MODEL: PJNG01**  
 DESCRIPTION: MOSIN NAGANT M44 MUZZLE BRAKE  
 LENGTH: 4"  
 NET WEIGHT (OZ): 7.6  
 COMPATIBILITY: FITS ALL CARBINE MODELS (M44)  
 FEATURES: HEAT TREATED/REDUCES CLIMB  
 FINISH: BLACK OXIDE/ALL STEEL CONSTRUCTION



**MODEL: PJS002P**  
 DESCRIPTION: SKS MUZZLE BRAKE LONG  
 LENGTH: 3.25"  
 NET WEIGHT (OZ): 3.8  
 COMPATIBILITY: CHINESE & RUSSIAN SKS MODELS  
 FEATURES: HEAT TREATED/REDUCES CLIMB  
 FINISH: BLACK OXIDE/ALL STEEL CONSTRUCTION



**MODEL: PJS003B**  
 DESCRIPTION: SKS MUZZLE BRAKE/BOLT-ON  
 LENGTH: 4"  
 NET WEIGHT (OZ): 7.3  
 COMPATIBILITY: ALL SKS MODELS  
 FEATURES: HEAT TREATED/REDUCES CLIMB  
 FINISH: BLACK OXIDE/ALL STEEL CONSTRUCTION



**MODEL: PJS005T**  
 DESCRIPTION: SKS MUZZLE BRAKE/TWIST-ON  
 LENGTH: 3.5"  
 NET WEIGHT (OZ): 5.4  
 COMPATIBILITY: ROMANIAN, CHINESE & RUSSIAN MODELS  
 FEATURES: HEAT TREATED/REDUCES CLIMB  
 FINISH: BLACK OXIDE/ALL STEEL CONSTRUCTION



**MODEL: QD10M**  
**DESCRIPTION:** 1" RINGS 3/8" DOVETAIL BASE  
**DIAMETER:** 1"  
**PROFILE:** LOW  
**HEIGHT:** 0.90"  
**NET WEIGHT (OZ):** 2.5  
**SCREWS (P/RING):** 2  
**FINISH:** MATTE BLACK/AIRCRAFT GRADE ALUMINUM



**MODEL: QD10T**  
**DESCRIPTION:** 1" RINGS 3/8" DOVETAIL BASE  
**DIAMETER:** 1"  
**PROFILE:** HIGH  
**HEIGHT:** 1.35"  
**NET WEIGHT (OZ):** 2.7  
**SCREWS (P/RING):** 2  
**FINISH:** MATTE BLACK/AIRCRAFT GRADE ALUMINUM



**MODEL: QD30M**  
**DESCRIPTION:** 30MM RINGS/1" INSERT/3/8" DOVETAIL BASE  
**DIAMETER:** 30 MM  
**PROFILE:** MEDIUM  
**HEIGHT:** 1"  
**NET WEIGHT (OZ):** 3.6  
**SCREWS (P/RING):** 2  
**FINISH:** MATTE BLACK/AIRCRAFT GRADE ALUMINUM



**MODEL: QD30T**  
**DESCRIPTION:** 30MM RINGS/1" INSERT/3/8" DOVETAIL BASE  
**DIAMETER:** 30 MM  
**PROFILE:** HIGH  
**HEIGHT:** 1.45"  
**NET WEIGHT (OZ):** 3.4  
**SCREWS (P/RING):** 2  
**FINISH:** MATTE BLACK/AIRCRAFT GRADE ALUMINUM



**MODEL: QR01**  
**DESCRIPTION:** 30MM RUGER RING/1" INSERT  
**DIAMETER:** 30 MM  
**PROFILE:** LOW  
**HEIGHT:** 0.98"  
**NET WEIGHT (OZ):** 1.7  
**SCREWS (P/RING):** 4  
**FINISH:** MATTE BLACK/AIRCRAFT GRADE ALUMINUM



**MODEL: QR02**  
**DESCRIPTION:** 30MM RUGER RING/1" INSERT  
**DIAMETER:** 30 MM  
**PROFILE:** HIGH  
**HEIGHT:** 1.12"  
**NET WEIGHT (OZ):** 1.9  
**SCREWS (P/RING):** 4  
**FINISH:** MATTE BLACK/AIRCRAFT GRADE ALUMINUM



**MODEL: QRS01**  
**DESCRIPTION:** 30MM RUGER RING/1" INSERT  
**DIAMETER:** 30 MM  
**PROFILE:** LOW  
**HEIGHT:** 0.98"  
**NET WEIGHT (OZ):** 1.7  
**SCREWS (P/RING):** 4  
**FINISH:** SILVER/AIRCRAFT GRADE ALUMINUM



**MODEL: QRS02**  
**DESCRIPTION:** 30MM RUGER RING/1" INSERT  
**DIAMETER:** 30 MM  
**PROFILE:** HIGH  
**HEIGHT:** 1.12"  
**NET WEIGHT (OZ):** 1.9  
**SCREWS (P/RING):** 4  
**FINISH:** SILVER/AIRCRAFT GRADE ALUMINUM



**MODEL: QT01**

**DESCRIPTION:** 30MM TRI-RINGS/1" INSERT/  
WEAVER BASE

**DIAMETER:** 30 MM

**PROFILE:** HIGH

**HEIGHT:** 1.33"

**NET WEIGHT (OZ):** 3.8

**SCREWS (P/RING):** 2

**FINISH:** MATTE BLACK/AIRCRAFT  
GRADE ALUMINUM

**MODEL: QT02**

**DESCRIPTION:** 30MM TRI-RINGS/1" INSERT/  
WEAVER BASE

**DIAMETER:** 30 MM

**PROFILE:** MEDIUM

**HEIGHT:** 1.20"

**NET WEIGHT (OZ):** 3.7

**SCREWS (P/RING):** 2

**FINISH:** MATTE BLACK/AIRCRAFT  
GRADE ALUMINUM

**MODEL: QT03**

**DESCRIPTION:** 30MM TRI-RINGS/1" INSERT/  
WEAVER BASE

**DIAMETER:** 30 MM

**PROFILE:** LOW

**HEIGHT:** 0.98"

**NET WEIGHT (OZ):** 3.6

**SCREWS (P/RING):** 2

**FINISH:** MATTE BLACK/AIRCRAFT  
GRADE ALUMINUM

**MODEL: QW10M**

**DESCRIPTION:** 1" RINGS/ WEAVER BASE

**DIAMETER:** 1"

**PROFILE:** MEDIUM

**HEIGHT:** 1.20"

**NET WEIGHT (OZ):** 3

**SCREWS (P/RING):** 2

**FINISH:** MATTE BLACK/AIRCRAFT  
GRADE ALUMINUM

**MODEL: QW10N**

**DESCRIPTION:** 1" RINGS/ WEAVER BASE

**DIAMETER:** 1"

**PROFILE:** MEDIUM

**HEIGHT:** 1"

**NET WEIGHT (OZ):** 2.9

**SCREWS (P/RING):** 2

**FINISH:** MATTE BLACK/AIRCRAFT  
GRADE ALUMINUM

**MODEL: QW10S**

**DESCRIPTION:** 1" RINGS/ WEAVER BASE

**DIAMETER:** 1"

**PROFILE:** MEDIUM

**HEIGHT:** 0.90"

**NET WEIGHT (OZ):** 2.8

**SCREWS (P/RING):** 2

**FINISH:** MATTE BLACK/AIRCRAFT  
GRADE ALUMINUM

**MODEL: QW10T**

**DESCRIPTION:** 1" RINGS/ WEAVER BASE

**DIAMETER:** 1"

**PROFILE:** HIGH

**HEIGHT:** 1.45"

**NET WEIGHT (OZ):** 3.1

**SCREWS (P/RING):** 2

**FINISH:** MATTE BLACK/AIRCRAFT GRADE ALUMINUM

**MODEL: QWS10S**

**DESCRIPTION:** 1" RINGS/ WEAVER BASE/SILVER

**DIAMETER:** 1"

**PROFILE:** MEDIUM

**HEIGHT:** 0.90"

**NET WEIGHT (OZ):** 2.8

**SCREWS (P/RING):** 2

**FINISH:** SILVER/AIRCRAFT GRADE ALUMINUM



**MODEL: QW10TM**  
**DESCRIPTION:** 1" RINGS/ WEAVER BASE/  
 HEAVY DUTY  
**DIAMETER:** 1"  
**PROFILE:** MEDIUM  
**HEIGHT:** 1"  
**NET WEIGHT (OZ):** 3.6  
**SCREWS (P/RING):** 4 (HEAVY DUTY)  
**FINISH:** MATTE BLACK/AIRCRAFT  
 GRADE ALUMINUM



**MODEL: QW30L**  
**DESCRIPTION:** 30MM RINGS/1" INSERT/  
 WEAVER BASE  
**DIAMETER:** 30 MM  
**PROFILE:** LOW  
**HEIGHT:** 0.70"  
**NET WEIGHT (OZ):** 2.3  
**SCREWS (P/RING):** 2  
**FINISH:** MATTE BLACK/AIRCRAFT  
 GRADE ALUMINUM



**MODEL: QW30M**  
**DESCRIPTION:** 30MM RINGS/1" INSERT/  
 WEAVER BASE  
**DIAMETER:** 30 MM  
**PROFILE:** MEDIUM  
**HEIGHT:** 1.25"  
**NET WEIGHT (OZ):** 3.1  
**SCREWS (P/RING):** 2  
**FINISH:** MATTE BLACK/AIRCRAFT  
 GRADE ALUMINUM



**MODEL: QWS30M**  
**DESCRIPTION:** 30MM RINGS/1" INSERT/  
 WEAVER BASE  
**DIAMETER:** 30 MM  
**PROFILE:** MEDIUM  
**HEIGHT:** 1.25"  
**NET WEIGHT (OZ):** 3.1  
**SCREWS (P/RING):** 2  
**FINISH:** SILVER/AIRCRAFT GRADE  
 ALUMINUM



**MODEL: QW30WM**  
**DESCRIPTION:** 30MM/1" INSERT CANTILEVER MOUNT  
**DIAMETER:** 30MM  
**PROFILE:** 1.70  
**HEIGHT:** 3.3"  
**NET WEIGHT (OZ):** 4.4  
**SCREWS (P/RING):** 6 (HEAVY DUTY)  
**FINISH:** MATTE BLACK/AIRCRAFT GRADE  
 ALUMINUM



**MODEL: QW30WS**  
**DESCRIPTION:** 30MM RINGS/1" INSERT/  
 WEAVER BASE  
**DIAMETER:** 30 MM  
**PROFILE:** HIGH  
**HEIGHT:** 1.40"  
**NET WEIGHT (OZ):** 3.2  
**SCREWS (P/RING):** 6 (HEAVY DUTY)  
**FINISH:** MATTE BLACK/AIRCRAFT  
 GRADE ALUMINUM



**MODEL: QW30TH**  
**DESCRIPTION:** 30MM RINGS/1" INSERT/  
 WEAVER BASE  
**DIAMETER:** 30 MM  
**PROFILE:** HIGH  
**HEIGHT:** 1.45"  
**NET WEIGHT (OZ):** 6.1  
**SCREWS (P/RING):** 4 (HEAVY DUTY)  
**FINISH:** MATTE BLACK/AIRCRAFT  
 GRADE ALUMINUM



**MODEL: QW30TM**  
**DESCRIPTION:** 30MM RINGS/1" INSERT/  
 WEAVER BASE  
**DIAMETER:** 1"  
**PROFILE:** MEDIUM  
**HEIGHT:** 1"  
**NET WEIGHT (OZ):** 7.9  
**SCREWS (P/RING):** 4 (HEAVY DUTY)  
**FINISH:** MATTE BLACK/AIRCRAFT  
 GRADE ALUMINUM



**MODEL: QW30TL**  
**DESCRIPTION:** 30MM RINGS/1" INSERT/  
 WEAVER BASE  
**DIAMETER:** 1"  
**PROFILE:** MEDIUM  
**HEIGHT:** 1"  
**NET WEIGHT (OZ):** 7.9  
**SCREWS (P/RING):** 4 (HEAVY DUTY)  
**FINISH:** MATTE BLACK/AIRCRAFT  
 GRADE ALUMINUM



**MODEL: M101**  
**DESCRIPTION:** M1 CARBINE MOUNT .30 CAL CARBINE/WEAVER  
**LENGTH:** 3.5"  
**NET WEIGHT (OZ):** 2.6  
**FEATURES:** ACCEPTS ALL WEAVER STANDARD RINGS  
**FINISH:** BLACK ANODIZED AIRCRAFT GRADE ALUMINUM



**MODEL: M1401**  
**DESCRIPTION:** M14 /M1A MOUNT SIDE SCOPE MOUNT/WEAVER  
**LENGTH:** 6"  
**NET WEIGHT (OZ):** 10.9  
**FEATURES:** ACCEPTS ALL WEAVER STANDARD RINGS  
**FINISH:** BLACK ANODIZED AIRCRAFT GRADE ALUMINUM



**MODEL: MB1231**  
**DESCRIPTION:** 12"x0.31" UNCUT PICATINNY BLANK RAIL/  
 WEAVER STYLE RAIL  
**LENGTH:** 12"  
**NET WEIGHT (OZ):** 3.1  
**FEATURES:** ACCEPTS ALL WEAVER  
 STANDARD RINGS  
**FINISH:** BLACK ANODIZED AIRCRAFT GRADE ALUMINUM



**MODEL: MB1248**  
**DESCRIPTION:** 12"x0.40" UNCUT PICATINNY BLANK RAIL/  
 WEAVER STYLE RAIL  
**LENGTH:** 12"  
**NET WEIGHT (OZ):** 3.8  
**FEATURES:** ACCEPTS ALL WEAVER STANDARD RINGS  
**FINISH:** BLACK ANODIZED AIRCRAFT GRADE ALUMINUM



**MODEL: MB1264**  
**DESCRIPTION:** 12"x0.64" UNCUT PICATINNY BLANK RAIL  
 WEAVER STYLE RAIL  
**LENGTH:** 12"  
**NET WEIGHT (OZ):** 4.8  
**FEATURES:** ACCEPTS ALL WEAVER  
 STANDARD RINGS  
**FINISH:** BLACK ANODIZED AIRCRAFT GRADE ALUMINUM



**MODEL: MG001Q**  
**DESCRIPTION:** GALIL TACTICAL QUAD RAIL  
**LENGTH:** 11.5"  
**NET WEIGHT (OZ):** 16  
**FEATURES:** ACCEPTS ALL STANDARD WEAVER TACTICAL  
 ACCESSORIES  
**COMPATIBLE:** GALIL  
**FINISH:** BLACK ANODIZED AIRCRAFT GRADE ALUMINUM

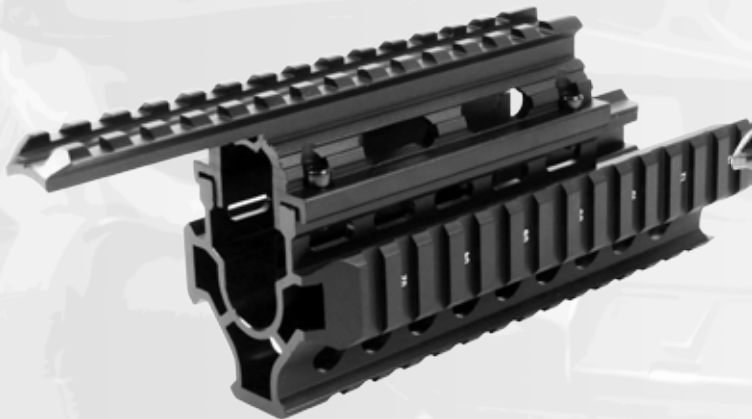




**MODEL:** MG3001  
**DESCRIPTION:** G3/91 TACTICAL TRI-RAIL HAND GUARD  
**LENGTH:** 12"  
**NET WEIGHT (OZ):** 20  
**FEATURES:** ACCEPTS ALL STANDARD WEAVER TACTICAL ACCESSORIES  
**COMPATIBLE:** G3/91  
**FINISH:** BLACK ANODIZED AIRCRAFT GRADE AL ALUMINUM



**MODEL:** MHB001  
**DESCRIPTION:** UNIVERSAL PISTOL 45 DEGREE BASE MOUNT  
**LENGTH:** 5.75"  
**NET WEIGHT (OZ):** 3.4  
**FEATURES:** ACCEPTS ALL STANDARD WEAVER TACTICAL ACCESSORIES  
**FINISH:** BLACK ANODIZED AIRCRAFT GRADE ALUMINUM



**MODEL:** MK003Q  
**DESCRIPTION:** AK QUAD RAIL MOUNT 2-PIECE CONSTRUCTION W/PICATINNY RAILS  
**LENGTH:** 8.25"  
**NET WEIGHT (OZ):** 9.2  
**FEATURES:** ACCEPTS ALL STANDARD WEAVER TACTICAL ACCESSORIES  
**COMPATIBLE:** ROMANIAN AK'S & VARIANTS  
**FINISH:** BLACK ANODIZED AIRCRAFT GRADE ALUMINUM



**MODEL:** MK006Q  
**DESCRIPTION:** AK QUAD RAIL MOUNT 2-PIECE CONSTRUCTION W/PICATINNY RAILS  
**LENGTH:** 8"  
**NET WEIGHT (OZ):** 8.9  
**FEATURES:** ACCEPTS ALL STANDARD WEAVER TACTICAL ACCESSORIES  
**COMPATIBLE:** HUNGARIAN AK'S & VARIANTS  
**FINISH:** BLACK ANODIZED AIRCRAFT GRADE ALUMINUM



**MODEL:** MK009Q  
**DESCRIPTION:** AK QUAD RAIL MOUNT 2-PIECE CONSTRUCTION W/PICATINNY RAILS  
**LENGTH:** 6.75"  
**NET WEIGHT (OZ):** 12.8  
**FEATURES:** ACCEPTS ALL STANDARD WEAVER TACTICAL ACCESSORIES  
**COMPATIBLE:** AK47/YUGO M70 VARIANTS  
**FINISH:** BLACK ANODIZED AIRCRAFT GRADE ALUMINUM



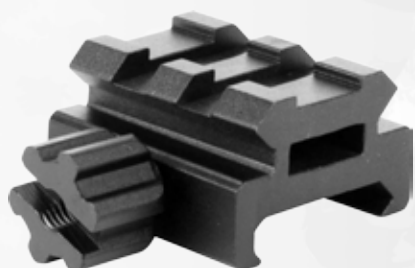
**MODEL:** MK004S  
**DESCRIPTION:** AK DOUBLE RAIL SIDE MOUNT/QR LEVER 12 TOP SLOT RAILS/8 SIDE SLOT  
**LENGTH:** 5.25"  
**NET WEIGHT (OZ):** 8.5  
**FEATURES:** ACCEPTS ALL STANDARD WEAVER TACTICAL ACCESSORIES  
**FINISH:** BLACK ANODIZED AIRCRAFT GRADE ALUMINUM



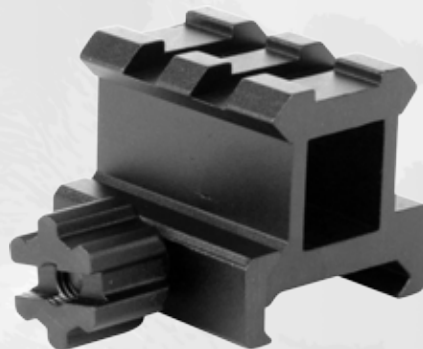
**MODEL: MK002T**  
 DESCRIPTION: AK TOP RAIL MOUNT W/TRI RAIL  
 LENGTH: 13"  
 NET WEIGHT (OZ): 10.2  
 FEATURES: ACCEPTS ALL WEAVER STANDARD RINGS  
 FINISH: BLACK ANODIZED AIRCRAFT GRADE ALUMINUM



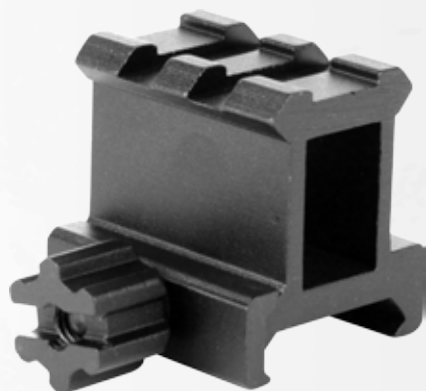
**MODEL: MK005T**  
 DESCRIPTION: AK/SAIGA ADJUSTABLE TOP RAIL MOUNT W/TRI-RAIL  
 LENGTH: 12.5 -13.5"  
 NET WEIGHT (OZ): 10.5  
 FEATURES: ACCEPTS ALL WEAVER/ PICATINNY STANDARD RINGS  
 FINISH: BLACK ANODIZED AIRCRAFT GRADE ALUMINUM



**MODEL: ML106**  
 DESCRIPTION: RISER MOUNT/LOW PROFILE  
 LENGTH: 1.25"  
 HEIGHT: 0.5"  
 NET WEIGHT (OZ): 0.9  
 FEATURES: ACCEPTS ALL WEAVER STANDARD RINGS  
 FINISH: BLACK ANODIZED AIRCRAFT GRADE ALUMINUM



**MODEL: ML107**  
 DESCRIPTION: RISER MOUNT/MEDIUM PROFILE  
 LENGTH: 1.25"  
 HEIGHT: 0.75"  
 NET WEIGHT (OZ): 1  
 FEATURES: ACCEPTS ALL WEAVER STANDARD RINGS  
 FINISH: BLACK ANODIZED AIRCRAFT GRADE ALUMINUM



**MODEL: ML108**  
 DESCRIPTION: RISER MOUNT/HIGH PROFILE  
 LENGTH: 1.25"  
 HEIGHT: 1"  
 NET WEIGHT (OZ): 1.1  
 FEATURES: ACCEPTS ALL WEAVER STANDARD RINGS  
 FINISH: BLACK ANODIZED AIRCRAFT GRADE ALUMINUM



**MODEL: MML**  
 DESCRIPTION: MARLIN SCOPE MOUNT  
 LENGTH: 4.7"  
 NET WEIGHT (OZ): 1.2  
 FEATURES: ACCEPTS ALL WEAVER STANDARD RINGS  
 FINISH: BLACK ANODIZED AIRCRAFT GRADE ALUMINUM



**MODEL: MMP5**  
 DESCRIPTION: MP5/H&K SCOPE MOUNT  
 LENGTH: 4.9"  
 NET WEIGHT (OZ): 2.5  
 FEATURES: ACCEPTS ALL WEAVER STANDARD RINGS  
 FINISH: BLACK ANODIZED AIRCRAFT GRADE ALUMINUM



**MODEL: MMP02**  
 DESCRIPTION: MP HI-PRO CLAW PICATINNY MOUNT  
 LENGTH: 5.25"  
 NET WEIGHT (OZ): 7.4  
 FEATURES: ACCEPTS ALL STANDARD WEAVER TACTICAL ACCESSORIES  
 FINISH: BLACK ANODIZED AIRCRAFT GRADE ALUMINUM



**MODEL: MNG**  
 DESCRIPTION: M44/MOSIN NAGANT SCOPE MOUNT  
 LENGTH: 6.5"  
 NET WEIGHT (OZ): 2.6  
 FEATURES: ACCEPTS ALL WEAVER STANDARD RINGS  
 COMPATIBLE: M44, 91/30, M38, M39, CHINESE 53  
 FINISH: BLACK ANODIZED AIRCRAFT GRADE ALUMINUM



**MODEL: MNGS**  
 DESCRIPTION: M44/MOSIN NAGANT SCOPE MOUNT (SHORT)  
 LENGTH: 6"  
 NET WEIGHT (OZ): 2.3  
 FEATURES: ACCEPTS ALL WEAVER STANDARD RINGS  
 COMPATIBLE: M44, 91/30, M38, M39, CHINESE 53  
 FINISH: BLACK ANODIZED AIRCRAFT GRADE ALUMINUM



**MODEL: MNGTM**  
 DESCRIPTION: MOSIN NAGANT TRI-RAIL MOUNT W/ EXTENDED RAILS AND 17 MOUNTING SLOTS  
 LENGTH: 7"  
 NET WEIGHT (OZ): 6.5  
 FEATURES: ACCEPTS ALL WEAVER STANDARD RINGS  
 FINISH: BLACK ANODIZED AIRCRAFT GRADE ALUMINUM



**MODEL: MP1911**  
 DESCRIPTION: 1911/A1 .45 ACP PISTOL MOUNT FULL LENGTH  
 LENGTH: 5.5"  
 NET WEIGHT (OZ): 4.6  
 FEATURES: ACCEPTS ALL WEAVER STANDARD RINGS  
 FINISH: BLACK ANODIZED AIRCRAFT GRADE ALUMINUM



**MODEL: MRB001**

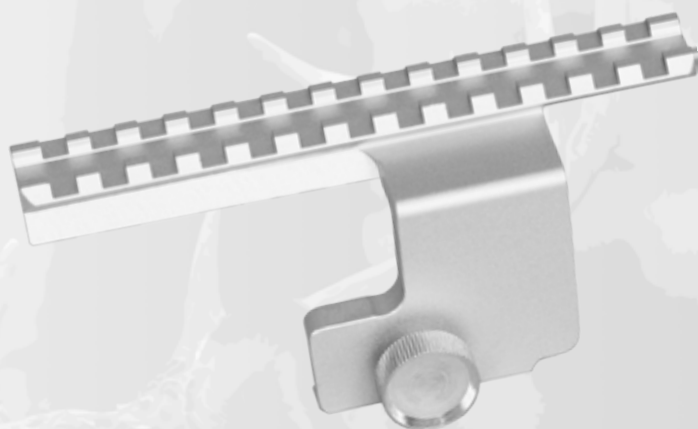
**DESCRIPTION:** MINI-14 SIDE MOUNT/BLACK BASE MOUNTS DIRECTLY ON THE SIDE OF THE RECEIVER

**LENGTH:** 5.4"

**NET WEIGHT (OZ):** 4.3

**FEATURES:** ACCEPTS ALL WEAVER STANDARD RINGS

**FINISH:** BLACK ANODIZED AIRCRAFT GRADE ALUMINUM

**MODEL: MRS001**

**DESCRIPTION:** MINI-14 SIDE MOUNT/SILVER MOUNTS DIRECTLY ON THE SIDE OF THE RECEIVER

**LENGTH:** 5.4"

**NET WEIGHT (OZ):** 4.3

**FEATURES:** ACCEPTS ALL WEAVER STANDARD RINGS

**FINISH:** SILVER/ANODIZED AIRCRAFT GRADE ALUMINUM

**MODEL: MRB002**

**DESCRIPTION:** RUGER MINI14/MINI 30 RANCH RIFLE MOUNT/BLACK

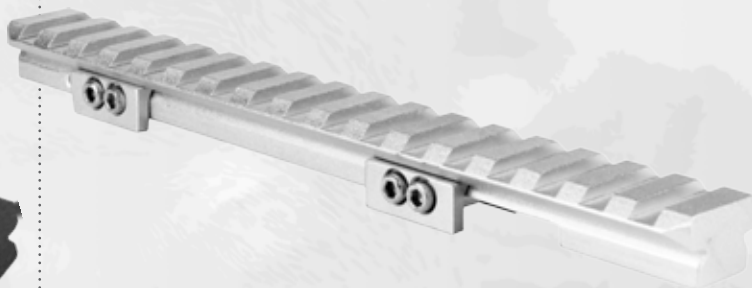
**LENGTH:** FITS ONTO THE RANCH RIFLE RECEIVER

**NET WEIGHT (OZ):** 7"

**FEATURES:** 3.3

**FINISH:** ACCEPTS ALL WEAVER STANDARD RINGS

BLACK ANODIZED AIRCRAFT GRADE ALUMINUM

**MODEL: MRS002**

**DESCRIPTION:** RUGER MINI14/MINI 30 RANCH RIFLE MOUNT/SILVER

**LENGTH:** FITS ONTO THE RANCH RIFLE RECEIVER

**NET WEIGHT (OZ):** 7"

**FEATURES:** 3.3

**FINISH:** ACCEPTS ALL WEAVER STANDARD RINGS

SILVER/AIRCRAFT GRADE ALUMINUM

**MODEL: MRB003**

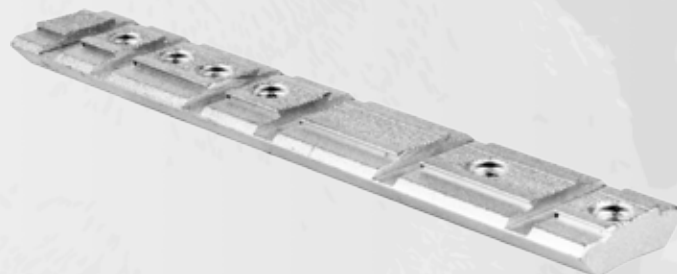
**DESCRIPTION:** 10/22 RUGER BASE MOUNT/BLACK/FITS ONTO RECEIVER

**LENGTH:** 4.7"

**NET WEIGHT (OZ):** 1.1

**FEATURES:** ACCEPTS ALL STANDARD WEAVER & DOVETAIL RINGS

**FINISH:** BLACK ANODIZED AIRCRAFT GRADE ALUMINUM

**MODEL: MRS003**

**DESCRIPTION:** 10/22 RUGER BASE MOUNT/SILVER/FITS ONTO RECEIVER

**LENGTH:** 4.7"

**NET WEIGHT (OZ):** 1.1

**FEATURES:** ACCEPTS ALL STANDARD WEAVER & DOVETAIL RINGS

**FINISH:** SILVER/ANODIZED AIRCRAFT GRADE ALUMINUM



**MODEL: MRB004**  
**DESCRIPTION:** RUGER 10/22 SEE THROUGH BASE MOUNT  
 PERMITS USE OF FACTORY IRON SIGHT  
**LENGTH:** 4.6"  
**NET WEIGHT (OZ):** 1.80  
**FEATURES:** ACCEPTS ALL WEAVER STANDARD RINGS  
**FINISH:** BLACK ANODIZED AIRCRAFT GRADE ALUMINUM



**MODEL: MRSa1R**  
**DESCRIPTION:** CARBINE STOCK SLING PLATE ADAPTER/RIGHT HAND  
**LENGTH:** 1.5"  
**NET WEIGHT (OZ):** 0.8  
**FEATURES:** ONE CIRCULAR HOOK  
**FINISH:** BLACK ANODIZED AIRCRAFT GRADE ALUMINUM



**MODEL: MRSa1L**  
**DESCRIPTION:** CARBINE STOCK SLING PLATE ADAPTER/LEFT HAND  
**LENGTH:** 1.5"  
**NET WEIGHT (OZ):** 0.8  
**FEATURES:** ONE CIRCULAR HOOK  
**FINISH:** BLACK ANODIZED AIRCRAFT GRADE ALUMINUM



**MODEL: MRSa2**  
**DESCRIPTION:** CARBINE STOCK SLING PLATE ADAPTER/RIGHT HAND  
**LENGTH:** 1.5"  
**NET WEIGHT (OZ):** 0.8  
**FEATURES:** ONE SLOT HOOK  
**FINISH:** BLACK ANODIZED AIRCRAFT GRADE ALUMINUM



**MODEL: MRSa3**  
**DESCRIPTION:** CARBINE STOCK AMBI SLING PLATE ADAPTER  
**LENGTH:** 1.5"  
**NET WEIGHT (OZ):** 0.8  
**FEATURES:** DOUBLE CIRCULAR HOOKS  
**FINISH:** BLACK ANODIZED AIRCRAFT GRADE ALUMINUM



**MODEL: MRSa4**  
**DESCRIPTION:** CARBINE STOCK AMBI SLING PLATE ADAPTER  
**LENGTH:** 1.5"  
**NET WEIGHT (OZ):** 0.8  
**FEATURES:** DOUBLE SLOT HOOKS  
**FINISH:** BLACK ANODIZED AIRCRAFT GRADE ALUMINUM

**MODEL: MT001****DESCRIPTION:** AR15 HANDGUARD RAIL RIFLE LENGTH**LENGTH:** 11.2"**NET WEIGHT (OZ):** 5.2**FEATURES:** ACCEPTS ALL WEAVER STANDARD RINGS**FINISH:** BLACK ANODIZED AIRCRAFT GRADE ALUMINUM**MODEL: MT002****DESCRIPTION:** M4 HANDGUARD RAIL CARBINE LENGTH/  
FITS ON TOP OR BOTTOM OF HANDGUARD**LENGTH:** 5.9"**NET WEIGHT (OZ):** 2.5**FEATURES:** ACCEPTS ALL WEAVER STANDARD RINGS**FINISH:** BLACK ANODIZED AIRCRAFT GRADE ALUMINUM**MODEL: MT003****DESCRIPTION:** AR15/M16 Z TYPE CARRY HANDLE MOUNT W/TRI-MOUNT TABS**LENGTH:** 11.2"**NET WEIGHT (OZ):** 8.3**FEATURES:** ACCEPTS ALL WEAVER STANDARD RINGS**FINISH:** BLACK ANODIZED AIRCRAFT GRADE ALUMINUM**MODEL: MT004****DESCRIPTION:** AR15 MOUNT 5 1/2" WEAVER STYLE CONVERSION RAIL  
FOR AR15/M16 CARRY HANDLE**LENGTH:** 5.5"**NET WEIGHT (OZ):** 2.5**FEATURES:** ACCEPTS ALL WEAVER STANDARD RINGS**FINISH:** BLACK ANODIZED AIRCRAFT GRADE ALUMINUM**MODEL: MT005****DESCRIPTION:** U.S. FORCES AR15/M16 MOUNT WEAVER STYLE  
CONVERSION RAIL FOR AR15/M16 CARRY HANDLE**LENGTH:** 5.2"**NET WEIGHT (OZ):** 2.2**FEATURES:** ACCEPTS ALL WEAVER STANDARD RINGS**FINISH:** BLACK ANODIZED AIRCRAFT GRADE ALUMINUM**MODEL: MT006****DESCRIPTION:** AR15/M16 30MM W/1" INSERTS ONE PIECE MOUNT/  
RING SET FOR CARRY HANDLE**LENGTH:** 4.1"**NET WEIGHT (OZ):** 5.4**FINISH:** BLACK ANODIZED AIRCRAFT GRADE ALUMINUM




**MODEL: MT006C**

**DESCRIPTION:** AR15/M16 COMPACT 30MM W/1" INSERTS ONE  
PIECE MOUNT/RING SET FOR CARRY HANDLE

**LENGTH:** 2.55"

**NET WEIGHT (OZ):** 3.5

**FINISH:** BLACK ANODIZED AIRCRAFT GRADE ALUMINUM


**MODEL: MT007**

**DESCRIPTION:** VERTICLE GRIP W/6" WEAVER  
RAIL/TWIST PIN

**LENGTH:** 4.5"

**NET WEIGHT (OZ):** 4.2

**FEATURES:** ATTACHES TO MOST WEAVER/  
PICATINNY RAILS & HANDGUARDS

**FINISH:** POLYMER


**MODEL: MT007C**

**DESCRIPTION:** VERTICLE GRIP W/6" RAIL/  
END CAP CONCEALS ONE  
CR123A BATTERY/CROSS PIN

**LENGTH:** 14.5"

**NET WEIGHT (OZ):** 5

**FEATURES:** ATTACHES TO MOST  
WEAVER/PICATINNY RAILS &  
HANDGUARDS

**FINISH:** POLYMER


**MODEL: MT007E**

**DESCRIPTION:** VERTICLE GRIP W/6" RAIL/  
ERGONOMIC FINGER GROOVES  
FOR COMFORTABLE GRIP

**LENGTH:** 4.7"

**NET WEIGHT (OZ):** 6.5

**FEATURES:** ATTACHES TO MOST WEAVER/  
PICATINNY RAILS & HANDGUARDS

**FINISH:** POLYMER


**MODEL: MT007FH**

**DESCRIPTION:** TACTICAL FOLDABLE GRIP/  
FOLDS INTO 5 DIFFERENT  
POSITIONS/END CAP  
CONCEALS STORAGE AREA

**LENGTH:** 5.6"

**NET WEIGHT (OZ):** 4.9

**FEATURES:** ATTACHES TO MOST  
WEAVER/PICATINNY RAILS &  
HANDGUARDS

**FINISH:** POLYMER


**MODEL: MT007T**

**DESCRIPTION:** TACTICAL VERTICAL GRIP W/  
DOUBLE PRESSURE SWITCH  
HOUSING/END CAP CONCEALS  
STORAGE AREA

**LENGTH:** 5.3"

**NET WEIGHT (OZ):** 5.3

**FEATURES:** ATTACHES TO MOST WEAVER/  
PICATINNY RAILS & HANDGUARDS

**FINISH:** POLYMER

**MODEL: MTCR30**

DESCRIPTION: TACTICAL 30MM CANTILEVER SCOPE MOUNT  
 RING DIAMETER: 30MM  
 SADDLE HEIGHT: SADDLE HEIGHT: 1.0"  
 LENGTH: 5.0"  
 NET WEIGHT (OZ): 8.7  
 SCREWS (PER RING/MOUNT): 12  
 FINISH: MATTE BLACK/AIRCRAFT GRADE ALUMINUM

**MODEL: MTCR01**

DESCRIPTION: TACTICAL 1" CANTILEVER SCOPE MOUNT  
 RING DIAMETER: 1"  
 SADDLE HEIGHT: 1.0"  
 LENGTH: 5.0"  
 NET WEIGHT (OZ): 8.3  
 SCREWS (PER RING/MOUNT): 12  
 FINISH: MATTE BLACK/AIRCRAFT GRADE ALUMINUM

**MODEL: MT010**

DESCRIPTION: AR15 4" HANDGUARD RAIL  
 LENGTH: 4"  
 NET WEIGHT (OZ): 1.7  
 FEATURES: ACCEPTS ALL WEAVER STANDARD RINGS  
 FINISH: BLACK ANODIZED AIRCRAFT GRADE ALUMINUM

**MODEL: MT011**

DESCRIPTION: AR15 6" HANDGUARD RAIL  
 LENGTH: 6"  
 NET WEIGHT (OZ): 2.3  
 FEATURES: ACCEPTS ALL WEAVER STANDARD RINGS  
 FINISH: BLACK ANODIZED AIRCRAFT GRADE ALUMINUM

**MODEL: MT012**

DESCRIPTION: AR RISER MOUNT/LIFTS YOUR MOUNTING SURFACE BY 3/4"  
 LENGTH: 5.3"  
 NET WEIGHT (OZ): 5.8  
 FEATURES: ACCEPTS ALL WEAVER STANDARD RINGS  
 FINISH: BLACK ANODIZED AIRCRAFT GRADE ALUMINUM

**MODEL: MT013**

DESCRIPTION: AR15 FLAT TOP SCOPE RING MOUNT/1"  
 LENGTH: 5"  
 NET WEIGHT (OZ): 10.4  
 FEATURES: ACCEPTS ALL WEAVER STANDARD RINGS  
 FINISH: BLACK ANODIZED AIRCRAFT GRADE ALUMINUM



**MODEL: MT014**

**DESCRIPTION:** UNIVERSAL BARREL MOUNT/3 PIECE EQUIPPED WITH WEAVER RAILS

**LENGTH:** 1.24"

**NET WEIGHT (OZ):** 2.7

**FEATURES:** ACCEPTS ALL WEAVER STANDARD RINGS

**FINISH:** BLACK ANODIZED AIRCRAFT GRADE ALUMINUM



**MODEL: MT015**

**DESCRIPTION:** MAUSER K98 WEAVER SCOPE MOUNT/FITS MOST MAUSER K98 RIFLES

**LENGTH:** 5.2"

**NET WEIGHT (OZ):** 2.7

**FEATURES:** ACCEPTS ALL WEAVER STANDARD RINGS

**FINISH:** BLACK ANODIZED AIRCRAFT GRADE ALUMINUM



**MODEL: MT016**

**DESCRIPTION:** AR FRONT SIDE TOWER MOUNT/MOUNTS TO EACH SIDE OF FRONT SIGHT

**LENGTH:** 1.7"

**NET WEIGHT (OZ):** 2.9

**FEATURES:** ACCEPTS ALL STANDARD WEAVER TACTICAL ACCESSORIES

**FINISH:** BLACK ANODIZED AIRCRAFT GRADE ALUMINUM



**MODEL: MT017**

**DESCRIPTION:** AR DETACHABLE CARRY HANDLE/DUAL APERTURE/A2 DESIGN W/WINDAGE & ELEVATION ADJUSTMENTS

**LENGTH:** 6.9"

**NET WEIGHT (OZ):** 9.3

**FEATURES:** ATTACHES TO MOST WEAVER/PICATINNY RAILS

**FINISH:** BLACK ANODIZED AIRCRAFT GRADE ALUMINUM



**MODEL: MT018**

**DESCRIPTION:** 1" WEAVER MOUNT FOR FLASHLIGHT/LASER

**LENGTH:** 1.4"

**NET WEIGHT (OZ):** 1.2

**FEATURES:** ATTACHES TO MOST WEAVER/PICATINNY RAILS & HANDGUARDS

**FINISH:** BLACK ANODIZED AIRCRAFT GRADE ALUMINUM



**MODEL: MT019**

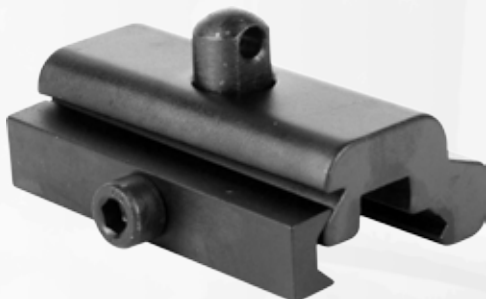
**DESCRIPTION:** TACTICAL LATCH

**LENGTH:** 1.4"

**FEATURES:** EXTENDS 20.4MM FROM THE CHARGING HANDLE

**FINISH:** ALL STEEL CONSTRUCTION

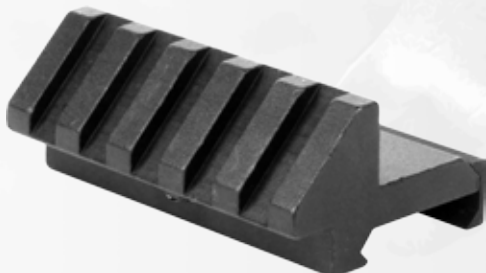


**MODEL: MT020**

**DESCRIPTION:** HARRIS BIPOD ADAPTOR/PICATINNY & WEAVER  
**LENGTH:** 2"  
**NET WEIGHT (OZ):** 2.5  
**FEATURES:** BIPOD/SLING SWIVELS  
**FINISH:** BLACK ANODIZED AIRCRAFT GRADE ALUMINUM

**MODEL: MT021**

**DESCRIPTION:** M4 HANDGUARD/QUAD RAIL CARBINE LENGTH W/12 PIECE  
 BLACK RUBBER RAIL COVERS  
**LENGTH:** 6.5"  
**NET WEIGHT (OZ):** 11.3  
**FEATURES:** ACCEPTS ALL STANDARD WEAVER TACTICAL ACCESSORIES  
**FINISH:** BLACK ANODIZED AIRCRAFT GRADE ALUMINUM

**MODEL: MT022**

**DESCRIPTION:** .45 DEGREE OFFSET PICATINNY RAIL MOUNT  
**LENGTH:** 2.1"  
**NET WEIGHT (OZ):** 1.9  
**FEATURES:** ACCEPTS ALL STANDARD WEAVER TACTICAL ACCESSORIES  
**FINISH:** BLACK ANODIZED AIRCRAFT GRADE ALUMINUM

**MODEL: MT023**

**DESCRIPTION:** AR DETACHABLE REAR SIGHT  
**LENGTH:** 2.75"  
**NET WEIGHT (OZ):** 4.3  
**COMPATIBLE:** M16 & M4  
**FEATURES:** DESIGNED TO ATTACH TO PICATINNY/MIL-STD 1913 RAILS  
**FINISH:** BLACK ANODIZED AIRCRAFT GRADE ALUMINUM/STEEL

**MODEL: MT024**

**DESCRIPTION:** DOVETAIL TO WEAVER MOUNT BASE  
**LENGTH:** 3.9"  
**FEATURES:** 9 SLOTS FOR QUICK AND EASY ADJUSTMENTS  
 ACCEPTS ALL WEAVER STANDARD RINGS  
**FINISH:** BLACK ANODIZED AIRCRAFT GRADE ALUMINUM

**MODEL: MT025**

**DESCRIPTION:** SHOTGUN TRI-RAIL BARREL MOUNT  
**LENGTH:** 1.5"  
**NET WEIGHT (OZ):** 4.3  
**FEATURES:** ACCEPTS ALL STANDARD WEAVER TACTICAL ACCESSORIES  
**COMPATIBLE:** 12G SHOTGUN  
**FINISH:** BLACK ANODIZED AIRCRAFT GRADE ALUMINUM



**MODEL: MT026**

DESCRIPTION: AR15 TRI-RAIL BARREL MOUNT

LENGTH: 2.5

NET WEIGHT (OZ): 4.5

FEATURES: ACCEPTS ALL STANDARD WEAVER TACTICAL ACCESSORIES

FINISH: BLACK ANODIZED AIRCRAFT GRADE ALUMINUM



**MODEL: MT027**

DESCRIPTION: TACTICAL 1" OFFSET RING MOUNT

LENGTH: 2.5

NET WEIGHT (OZ): 2.3

FEATURES: ACCEPTS ALL STANDARD WEAVER TACTICAL ACCESSORIES

FINISH: BLACK ANODIZED AIRCRAFT GRADE ALUMINUM



**MODEL: MT028**

DESCRIPTION: QRM 34MM TUBE SCOPE ADAPTER/WEAVER BASE

RING DIAMETER: 34 MM

PROFILE: MEDIUM

SADDLE HEIGHT: 1.25"

LENGTH: 2"

NET WEIGHT (OZ): 1.2

FINISH: MATTE BLACK/AIRCRAFT GRADE ALUMINUM



**MODEL: MT029**

DESCRIPTION: SLING RAIL MOUNT W/QUICK RELEASE SWING SWIVEL

LENGTH: 2"

NET WEIGHT (OZ): 1.7

FEATURES: QUICK DETACH/SWING SWIVEL

FINISH: BLACK ANODIZED AIRCRAFT GRADE ALUMINUM/STEEL



**MODEL: MT030**

DESCRIPTION: SLING RAIL MOUNT WITH PUSH BUTTON SWIVEL

LENGTH: 2"

NET WEIGHT (OZ): 1.8

FEATURES: QUICK DETACH/PUSH BUTTON SWIVEL

FINISH: BLACK ANODIZED AIRCRAFT GRADE ALUMINUM/STEEL



**MODEL: MT034**

DESCRIPTION: AR15/M16 A2 FRONT FLIP-UP SIGHT/GAS BLOCK

LENGTH: 2.25"

NET WEIGHT (OZ): 2

FEATURES: FITS STANDARD GAS BLOCKS

FINISH: BLACK ANODIZED AIRCRAFT GRADE ALUMINUM

**MODEL: MT035**

**DESCRIPTION:** AR15/M16 A2 DUAL APERTURE REAR FLIP-UP SIGHT  
**LENGTH:** 2"  
**NET WEIGHT (OZ):** 2.3  
**FEATURES:** 0.65 MOA/ALSO FOR M4 CARBINE  
**FINISH:** BLACK ANODIZED AIRCRAFT GRADE ALUMINUM

**MODEL: MT036**

**DESCRIPTION:** AR15/M16 SINGLE PLANE DUAL APERTURE REAR FLIP-UP SIGHT  
**LENGTH:** 2"  
**NET WEIGHT (OZ):** 2.1  
**FEATURES:** MULTIPLE APERTURE FOR QUICK ACCESS  
**FINISH:** BLACK ANODIZED AIRCRAFT GRADE ALUMINUM/STEEL

**MODEL: MT040**

**DESCRIPTION:** STANAG 4694 MID LENGTH QUAD RAIL  
 W/12 PCS BLACK RUBBER RAIL COVERS  
**LENGTH:** 8"  
**NET WEIGHT (OZ):** 14.6  
**FEATURES:** ACCEPTS ALL STANDARD WEAVER TACTICAL ACCESSORIES  
**FINISH:** BLACK ANODIZED AIRCRAFT GRADE ALUMINUM

**MODEL: MT041**

**DESCRIPTION:** STANAG 4694 CARBINE LENGTH QUAD RAIL  
 W/12 PCS BLACK RUBBER RAIL COVERS  
**LENGTH:** 6.5"  
**NET WEIGHT (OZ):** 11.8  
**FEATURES:** ACCEPTS ALL STANDARD WEAVER TACTICAL ACCESSORIES  
**FINISH:** BLACK ANODIZED AIRCRAFT GRADE ALUMINUM

**MODEL: MT042**

**DESCRIPTION:** STANAG 4694 RIFLE LENGTH QUAD RAIL  
 W/BLACK RUBBER RAIL COVERS  
**LENGTH:** 11.75"  
**NET WEIGHT (OZ):** 21.6  
**FEATURES:** ACCEPTS ALL STANDARD WEAVER TACTICAL ACCESSORIES  
**FINISH:** BLACK ANODIZED AIRCRAFT GRADE ALUMINUM

**MODEL: MT043**

**DESCRIPTION:** STANAG 4694 CARBINE LENGTH F/F QUAD RAIL W/EXTENDED RAIL  
**LENGTH:** 12.25"  
**NET WEIGHT (OZ):** 14.9  
**FEATURES:** ACCEPTS ALL STANDARD WEAVER TACTICAL ACCESSORIES  
**FINISH:** BLACK ANODIZED AIRCRAFT GRADE ALUMINUM





**MODEL: MT044**  
**DESCRIPTION:** STANAG 4694 MID LENGTH QUAD RAIL  
 W/BLACK RUBBER RAIL COVERS  
**LENGTH:** 10.25"  
**NET WEIGHT (OZ):** 14  
**FEATURES:** ACCEPTS ALL STANDARD WEAVER TACTICAL ACCESSORIES  
**FINISH:** BLACK ANODIZED AIRCRAFT GRADE ALUMINUM



**MODEL: MT045**  
**DESCRIPTION:** STANAG 4694 CARBINE LENGTH F/F QUAD RAIL  
**LENGTH:** 7"  
**NET WEIGHT (OZ):** 11.2  
**FEATURES:** ACCEPTS ALL STANDARD WEAVER TACTICAL ACCESSORIES  
**FINISH:** BLACK ANODIZED AIRCRAFT GRADE ALUMINUM

**NEW**



**MODEL: MT046**  
**DESCRIPTION:** PICATINNY BASE 36MM SCOPES ADAPTER/ADJUSTABLE  
**LENGTH:** 1.75"/2.25"  
**NET WEIGHT (OZ):** 1.5  
**FEATURES:** 2 ADJUSTABLE ACCESSORY RAILS 1.75"/2.25"  
**FINISH:** BLACK ANODIZED AIRCRAFT GRADE ALUMINUM

**NEW**



**MODEL: MT047**  
**DESCRIPTION:** PICATINNY BASE 45MM SCOPES ADAPTER/ADJUSTABLE  
**LENGTH:** 1.75"/2.25"  
**NET WEIGHT (OZ):** 1.7  
**FEATURES:** 2 ADJUSTABLE ACCESSORY RAILS 1.75"/2.25"  
**FINISH:** BLACK ANODIZED AIRCRAFT GRADE ALUMINUM

**NEW**



**MODEL: MT048**  
**DESCRIPTION:** PICATINNY BASE 30MM SCOPES ADAPTER/ADJUSTABLE  
**LENGTH:** 1.75"/2.25"  
**NET WEIGHT (OZ):** 1.2  
**FEATURES:** 2 ADJUSTABLE ACCESSORY RAILS 1.75"/2.25"  
**FINISH:** BLACK ANODIZED AIRCRAFT GRADE ALUMINUM

**NEW**



**MODEL: MT049**  
**DESCRIPTION:** PICATINNY BASE 1" SCOPES ADAPTER/ADJUSTABLE  
**LENGTH:** 1.75"/2.25"  
**NET WEIGHT (OZ):** 1.3  
**FEATURES:** 2 ADJUSTABLE ACCESSORY RAILS 1.75"/2.25"  
**FINISH:** BLACK ANODIZED AIRCRAFT GRADE ALUMINUM


**MODEL: MT050****DESCRIPTION:** SHOTGUN TOP RAIL MOUNT/870/M500**LENGTH:** 23"**NET WEIGHT (OZ):** 11.5**FEATURES:** ACCEPTS ALL STANDARD WEAVER TACTICAL ACCESSORIES**COMPATIBLE:** REMINGTON 870/MOSSBERG 500**FINISH:** BLACK ANODIZED AIRCRAFT GRADE ALUMINUM**MODEL: MT051****DESCRIPTION:** AR RIFLE LENGTH QUAD RAIL/V2**LENGTH:** 11.75"**NET WEIGHT (OZ):** 24**FEATURES:** ACCEPTS ALL STANDARD WEAVER TACTICAL ACCESSORIES**FINISH:** BLACK ANODIZED AIRCRAFT GRADE ALUMINUM**MODEL: MT052****DESCRIPTION:** AR CARBINE LENGTH QUAD RAIL/FREE FLOAT EXTENSION**LENGTH:** 12.5"**NET WEIGHT (OZ):** 21**FEATURES:** ACCEPTS ALL STANDARD WEAVER TACTICAL ACCESSORIES**FINISH:** BLACK ANODIZED AIRCRAFT GRADE ALUMINUM**MODEL: MT053****DESCRIPTION:** AR MID LENGTH QUAD RAIL 2-PIECE**LENGTH:** 8.5"**NET WEIGHT (OZ):** 18**FEATURES:** ACCEPTS ALL STANDARD WEAVER TACTICAL ACCESSORIES**FINISH:** BLACK ANODIZED AIRCRAFT GRADE ALUMINUM**MODEL: MT054****DESCRIPTION:** AR MID LENGTH F/F QUAD RAIL W/RUBBER RAIL COVERS**LENGTH:** 9.25"**NET WEIGHT (OZ):** 15**FEATURES:** ACCEPTS ALL STANDARD WEAVER TACTICAL ACCESSORIES**FINISH:** BLACK ANODIZED AIRCRAFT GRADE ALUMINUM**MODEL: MT055****DESCRIPTION:** AR CARBINE LENGTH F/F QUAD RAIL W/RUBBER RAIL COVERS**LENGTH:** 7.25"**NET WEIGHT (OZ):** 14.5**FEATURES:** ACCEPTS ALL STANDARD WEAVER TACTICAL ACCESSORIES**FINISH:** BLACK ANODIZED AIRCRAFT GRADE ALUMINUM



**MODEL: MT056**

**DESCRIPTION:** AR RIFLE LENGTH F/F QUAD RAIL W/RUBBER RAIL COVERS

**LENGTH:** 12.5"

**NET WEIGHT (OZ):** 22

**FEATURES:** ACCEPTS ALL STANDARD WEAVER TACTICAL ACCESSORIES

**FINISH:** BLACK ANODIZED AIRCRAFT GRADE ALUMINUM



**MODEL: MT057**

**DESCRIPTION:** AR CARBINE LENGTH 2 PIECE QUAD RAIL W/EXTENDED RAIL

**LENGTH:** 10.25"

**NET WEIGHT (OZ):** 19

**FEATURES:** ACCEPTS ALL STANDARD WEAVER TACTICAL ACCESSORIES

**FINISH:** BLACK ANODIZED AIRCRAFT GRADE ALUMINUM



**MODEL: MTE01**

**DESCRIPTION:** ESCORT 12G SHOTGUN FOREND/ALUMINUM

**LENGTH:** 6.5"

**NET WEIGHT (OZ):** 9

**FEATURES:** ACCEPTS ALL STANDARD WEAVER TACTICAL ACCESSORIES

**COMPATIBLE:** ESCORT SHOTGUN

**FINISH:** POLYMER/BLACK ANODIZED AIRCRAFT GRADE ALUMINUM



**MODEL: MTFN01**

**DESCRIPTION:** FN/FAL PICATINNY SCOPE MOUNT

**LENGTH:** 8.5"

**NET WEIGHT (OZ):** 8.3

**FEATURES:** ACCEPTS ALL WEAVER STANDARD RINGS

**FINISH:** BLACK ANODIZED AIRCRAFT GRADE ALUMINUM



**MODEL: MTFN02**

**DESCRIPTION:** FN/FAL QUAD RAIL MOUNT

**LENGTH:** 11.5"

**NET WEIGHT (OZ):** 19.2

**FEATURES:** ACCEPTS ALL WEAVER STANDARD RINGS

**FINISH:** BLACK ANODIZED AIRCRAFT GRADE ALUMINUM



**MODEL: MTSG02**

**DESCRIPTION:** SAIGA 12G QUAD RAIL MOUNT

**LENGTH:** 15"

**NET WEIGHT (OZ):** 21

**FEATURES:** ACCEPTS ALL STANDARD WEAVER TACTICAL ACCESSORIES

**COMPATIBLE:** 12 GAUGE SHOTGUN

**FINISH:** BLACK ANODIZED AIRCRAFT GRADE ALUMINUM



**MODEL: MTSG01**

DESCRIPTION: SAIGA QUAD RAIL MOUNT

LENGTH: 9.25"

NET WEIGHT (OZ): 15.2

FEATURES: ACCEPTS ALL STANDARD WEAVER TACTICAL ACCESSORIES

762.39

COMPATIBLE: BLACK ANODIZED AIRCRAFT GRADE ALUMINUM

FINISH:



NEW

**MODEL: MTPS01**

DESCRIPTION: PICATINNY ADAPTOR MOUNT/STANAG

LENGTH: 6"

NET WEIGHT (OZ): 2.5

FEATURES: ACCEPTS ALL STANDARD WEAVER TACTICAL ACCESSORIES

FINISH: BLACK ANODIZED AIRCRAFT GRADE ALUMINUM

**MODEL: MTGB1**

DESCRIPTION: AR QUAD RAIL BARREL MOUNT/GAS BLOCK

LENGTH: 1.75"

NET WEIGHT (OZ): 3

FEATURES: ACCEPTS ALL STANDARD WEAVER TACTICAL ACCESSORIES

COMPATIBLE: .750 BARRELS

FINISH: BLACK ANODIZED AIRCRAFT GRADE ALUMINUM



NEW

**MODEL: MTM14Q**

DESCRIPTION: MINI 14 TACTICAL QUAD RAIL

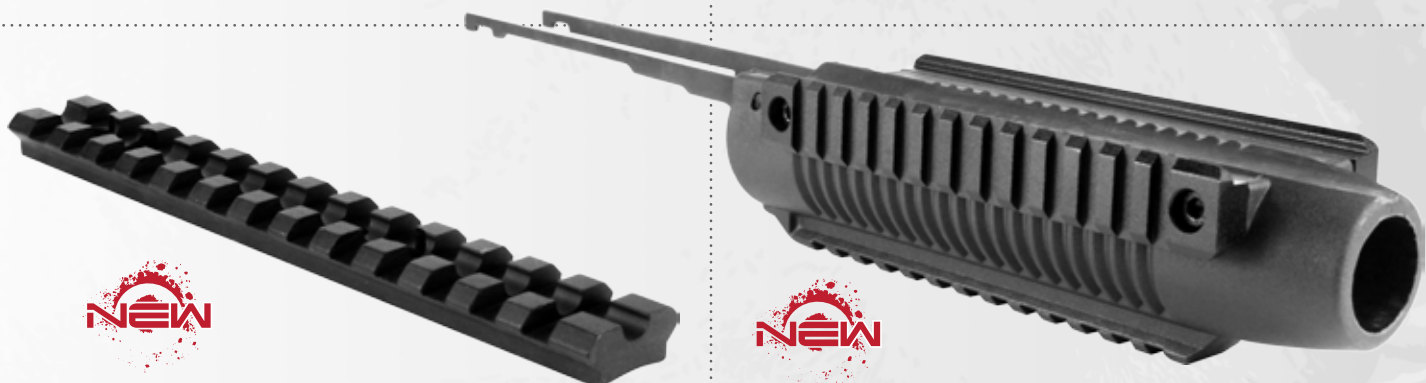
LENGTH: 8.25"

NET WEIGHT (OZ): 13

FEATURES: ACCEPTS ALL STANDARD WEAVER TACTICAL ACCESSORIES

COMPATIBLE: RUGER MINI 14 RANCH

FINISH: BLACK ANODIZED AIRCRAFT GRADE ALUMINUM



NEW

**MODEL: MTM500**

DESCRIPTION: SHOTGUN TOP RAIL MOUNT/M500

LENGTH: 5.5"

NET WEIGHT (OZ): 1.8

FEATURES: ACCEPTS ALL STANDARD WEAVER TACTICAL ACCESSORIES

COMPATIBLE: MOSSBERG 500

FINISH: BLACK ANODIZED AIRCRAFT GRADE ALUMINUM

NEW

**MODEL: MTM88**

DESCRIPTION: MAVERICK 88 SHOTGUN FOREND/ALUMINUM

LENGTH: 14.5"

NET WEIGHT (OZ): 13

FEATURES: ACCEPTS ALL STANDARD WEAVER TACTICAL ACCESSORIES

COMPATIBLE: MAVERICK 88/MOSSBERG 500

FINISH: POLYMER/BLACK ANODIZED AIRCRAFT GRADE ALUMINUM



**MODEL: MTMP1**

**DESCRIPTION:** MP TRI-RAIL HANDGUARD/1 PIECE UNIT W/RUBBER COVERS

**LENGTH:** 6"

**NET WEIGHT (OZ):** 8.7

**FEATURES:** ACCEPTS ALL STANDARD WEAVER TACTICAL ACCESSORIES

**COMPATIBLE:** MP5

**FINISH:** BLACK ANODIZED AIRCRAFT GRADE ALUMINUM



**INCLUDES:**

Shotshell Carrier



**MODEL: MTQSG1**

**DESCRIPTION:** TACTICAL SHOTGUN QUAD RAIL W/SIDE SADDLE (6 ROUNDS)

**LENGTH:** 21.2"

**NET WEIGHT (OZ):** 25.0

**FEATURES:** DESIGN ALLOWS FOR UNIMPEDED LOADING/UNLOADING

**COMPATIBLE:** REMINGTON 870/REMINGTON 1100

**FINISH:** BLACK ANODIZED AIRCRAFT GRADE ALUMINUM





**MODEL: AOPS01B (BLACK)**  
**DESCRIPTION:** ONE POINT BUNGEE RIFLE SLING  
**TESTED:** 250LB/HEAVY DUTY  
**WIDTH:** 1.30"  
**FEATURES:** STEEL CLIP/EASY ADJUSTMENT  
 BUNGEE SLING/  
 MULTIPLE LENGTHS



**MODEL: AOPS01G (GREEN)**  
**DESCRIPTION:** ONE POINT BUNGEE RIFLE SLING  
**TESTED:** 250LB/HEAVY DUTY  
**WIDTH:** 1.30"  
**FEATURES:** STEEL CLIP/EASY ADJUSTMENT  
 BUNGEE SLING/  
 MULTIPLE LENGTHS



**MODEL: AOPS01T (TAN)**  
**DESCRIPTION:** ONE POINT BUNGEE RIFLE SLING  
**TESTED:** 250LB/HEAVY DUTY  
**WIDTH:** 1.30"  
**FEATURES:** STEEL CLIP/EASY ADJUSTMENT  
 BUNGEE SLING/  
 MULTIPLE LENGTHS



**MODEL: AOPS (BLACK)**  
**DESCRIPTION:** ONE POINT BUNGEE SLING  
**TESTED:** 150LB/LIGHT RIFLES/AIRSOFT  
**WIDTH:** 1.25"  
**FEATURES:** QUICK ADJUSTMENT BUNGEE  
 SLING/MULTIPLE LENGTHS



**MODEL: AOPSG (GREEN)**  
**DESCRIPTION:** ONE POINT BUNGEE SLING  
**TESTED:** 150LB/LIGHT RIFLES/AIRSOFT  
**WIDTH:** 1.25"  
**FEATURES:** QUICK ADJUSTMENTS BUNGEE  
 SLING/MULTIPLE LENGTHS



**MODEL: AOPST (TAN)**  
**DESCRIPTION:** ONE POINT BUNGEE SLING  
**TESTED:** 150LB/LIGHT RIFLES/AIRSOFT  
**WIDTH:** 1.25"  
**FEATURES:** QUICK ADJUSTMENTS BUNGEE  
 SLING/MULTIPLE LENGTHS



**MODEL: ASBS2**  
**DESCRIPTION:** SHOTGUN BANDOLEER  
**LENGTH:** 26.5"  
**NET WEIGHT (OZ):** 9.4  
**FEATURES:** HEAVY DUTY NYLON/OVER THE SHOULDER DESIGN.  
 HOLDS 56 SHOTGUN SHELLS FOR 12 OR 20 GAUGE



**MODEL: ASBS**  
**DESCRIPTION:** SHOTGUN BANDOLEER  
**LENGTH:** 26.5"  
**NET WEIGHT (OZ):** 9.4  
**FEATURES:** HEAVY DUTY NYLON/OVER THE SHOULDER DESIGN.  
 HOLDS 50 SHOTGUN SHELLS FOR 12 OR 20 GAUGE.





**MODEL: CR123A**

**DESCRIPTION:** CR123A LITHIUM BATTERY  
**POWER:** 3V 1300 mAh  
**FEATURES:** DESIGNED FOR HIGH PERFORMANCE ELECTRICAL DEVICES/FLASHLIGHTS/LASERS



**MODEL: CR2032**

**DESCRIPTION:** CR2032 LITHIUM BATTERY  
**POWER:** 3V 220 mAh  
**FEATURES:** DESIGNED FOR HIGH PERFORMANCE ELECTRICAL DEVICES/SCOPES/RED DOT SIGHTS



**MODEL: CR44**

**DESCRIPTION:** CR44 LITHIUM BATTERY  
**POWER:** 1.55V 120 mAh  
**FEATURES:** DESIGNED FOR HIGH PERFORMANCE ELECTRICAL DEVICES/LASERS/BORE SIGHTERS



**MODEL: CR1/2 AA**

**DESCRIPTION:** CR123A LITHIUM BATTERY  
**POWER:** 3V 600 mAh  
**FEATURES:** DESIGNED FOR HIGH PERFORMANCE ELECTRICAL DEVICES/LASERS



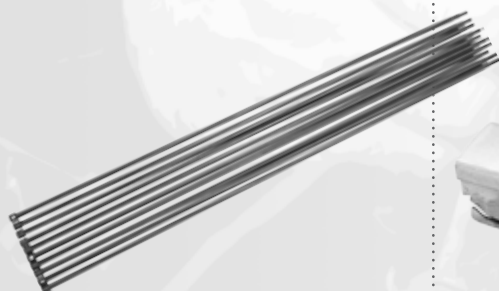
**MODEL: AKGS**

**DESCRIPTION:** AK PISTOL GRIP SCREW & BASE  
**LENGTH:** 4.25"  
**NET WEIGHT (OZ):** 0.9  
**COMPATIBLE:** AK47 & MAK90  
**FEATURES:** ATTACHES THE PISTOL GRIP TO THE STOCK  
**FINISH:** ALL STEEL CONSTRUCTION



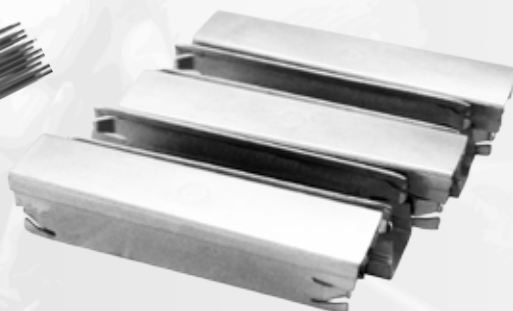
**MODEL: PJS006**

**DESCRIPTION:** AK/SKS STIPPER CLIPS (20 PACK)  
**COMPATIBLE:** MADE FOR SKS WITH NON DETACHABLE MAGAZINE/(ALSO FOR AK47 MAG LOADERS)  
**FEATURES:** HOLDS 10 ROUNDS MAXIMUM/ FOR 7.62X39 AMMO  
**FINISH:** ALL STEEL CONSTRUCTION



**MODEL: PJS007**

**DESCRIPTION:** SKS CLEANING ROD  
**LENGTH:** 17"  
**COMPATIBLE:** MADE FOR ALL SKS  
**FEATURES:** THREADED AND ACCEPTS SKS CLEANING SUPPLIES/STORE UNDER SKS BARREL  
**FINISH:** ALL STEEL CONSTRUCTION



**MODEL: PJ003**

**DESCRIPTION:** MOSIN NAGANT STIPPER CLIPS (5 PACK)  
**COMPATIBLE:** ALL MOSIN NAGANT RIFLES/ EASY LOADING  
**FEATURES:** HOLDS 5 ROUNDS MAXIMUM/ FOR 7.62X54 AMMO  
**FINISH:** SPRING STEEL/PARKERIZED FOR CORROSION



**MODEL: PJA1**

**DESCRIPTION:** A1 FRONT SIGHT TOOL/5 PRONG  
**NET WEIGHT (OZ):** 1  
**COMPATIBLE:** AR15/M16  
**FINISH:** ALL STEEL CONSTRUCTION



**MODEL: PJA2**  
**DESCRIPTION:** A2 FRONT SIGHT TOOL/4 PRONG  
**NET WEIGHT (OZ):** 1  
**COMPATIBLE:** AR15/M16  
**FINISH:** ALL STEEL CONSTRUCTION



**MODEL: PJA12**  
**DESCRIPTION:** A1 & A2 FRONT SIGHT TOOL/4 & 5 PRONG  
**NET WEIGHT (OZ):** 1.3  
**COMPATIBLE:** AR15/M16  
**FINISH:** ALL STEEL CONSTRUCTION



**MODEL: PJAB01**  
**DESCRIPTION:** ARROW LASER SIGHTING TOOL  
**POWER/WAVELENGTH::** 635/655NM GREEN LASER/5mW  
**LENGTH:** 2.4"  
**NET WEIGHT (OZ):** 0.4  
**BATTERY:** LR-41  
**RECOMMENDED DISTANCE:** 25-35 YARDS



**MODEL: PJFP**  
**DESCRIPTION:** M14 MUZZLE BRAKE PLIER TOOL  
**LENGTH:** 6.25"  
**NET WEIGHT (OZ):** 3.2  
**FEATURES:** ELIMINATES NOTCH STRIPPING/  
 CASTLE NUT PLIER  
**FINISH:** ALL STEEL CONSTRUCTION



**MODEL: PJART**  
**DESCRIPTION:** AR15 WRENCH TOOL  
**LENGTH:** 5.5"  
**NET WEIGHT (OZ):** 1.2  
**COMPATIBLE:** AR15  
**FINISH:** CARBON STEEL



**MODEL: PJCP**  
**DESCRIPTION:** M14/M1 HANDGUARD CLIP PLIERS  
**COMPATIBLE:** M1, M1A & M14  
**LENGTH:** 7"  
**FEATURES:** REMOVES CLIP WITHOUT DAMAGING  
 HANDGUARD/WOOD  
**FINISH:** ALL STEEL CONSTRUCTION



**MODEL: PJB001**  
**DESCRIPTION:** AR15 CHAMBER BRUSH  
**COMPATIBLE:** AR15  
**FEATURES:** 8-32 THREAD TO FIT STANDARD  
 RODS BRONZE BRISTLES/  
 STAINLESS STEEL TUFTS



**MODEL: PJB002**  
**DESCRIPTION:** 30/06 CHAMBER BRUSH  
**COMPATIBLE:** M1 GARAND  
**FEATURES:** 8-32 THREAD TO FIT  
 STANDARD RODS BRONZE  
 BRISTLES



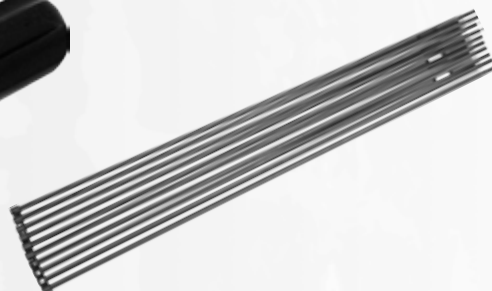
**MODEL: PJB003**  
**DESCRIPTION:** .308 CHAMBER BRUSH  
**COMPATIBLE:** AR10  
**FEATURES:** 8-32 THREAD TO FIT  
 STANDARD RODS BRONZE  
 BRISTLES



**MODEL: PJDRW**  
**DESCRIPTION:** AR15 DELTA RING WRENCH TOOL  
**FEATURES:** REMOVAL/INSTALLATION OF FORENDS  
 NON-SLIP RUBBER COATING  
**FINISH:** ALL STEEL CONSTRUCTION



**MODEL: PJAMBS**  
**DESCRIPTION:** AR15/M16 BOLT CARRIER  
 CARBON SCRAPER  
**LENGTH:** 5.5"  
**NET WEIGHT (OZ):** 1.2  
**COMPATIBLE:** AR15  
**FINISH:** CARBON STEEL W/PLASTIC  
 HANDLE



**MODEL: PJK003**  
**DESCRIPTION:** AK CLEANING ROD  
**LENGTH:** 15.75"  
**NET WEIGHT (OZ):** 22  
**FEATURES:** REPLACEMENT ROD FOR MILITARY  
 ISSUED CLEANING KIT  
**FINISH:** ALL STEEL CONSTRUCTION



**MODEL: PJKSA**  
**DESCRIPTION:** AK/SKS FRONT SIGHT ADJUSTMENT TOOL  
**LENGTH:** 1.5"  
**NET WEIGHT (OZ):** 5.2  
**COMPATIBLE:** AK47 & SKS  
**FEATURES:** ADJUST WINDAGE AND ELEVATION  
**FINISH:** CARBON STEEL



**MODEL: PJKSD**  
**DESCRIPTION:** AK/SKS SHELL DEFLECTOR  
**LENGTH:** 4.5"  
**NET WEIGHT (OZ):** 1  
**FEATURES:** FORCES SHELLS DOWNWARD  
 & AWAY FROM RIFLE/NO  
 GUNSMITHING REQUIRED  
**FINISH:** ALL STEEL CONSTRUCTION



**MODEL: PJMP5MC**  
**DESCRIPTION:** DOUBLE MAGAZINE CLAMP  
 W/QUICK RELEASE  
**LENGTH:** 2.5"  
**NET WEIGHT (OZ):** 4.7  
**COMPATIBLE:** MP5/GSG5  
**FEATURES:** HOLDS 2 STANDARD MAGAZINES  
**FINISH:** ALUMINUM



**MODEL: PJTSG**  
**DESCRIPTION:** SMALL TACTICAL VERTICAL  
 FOREGRIP/ALUMINUM  
**LENGTH:** 3.25"  
**NET WEIGHT (OZ):** 2.7  
**COMPATIBLE:** WEAVER/PICATINNY & NAR  
 STANAG 4694 RAILS  
**FINISH:** BLACK ANODIZED AIRCRAFT  
 GRADE ALUMINUM



**MODEL: PJTMG**  
**DESCRIPTION:** MED TACTICAL VERTICAL  
 FOREGRIP/ALUMINUM  
**LENGTH:** 4.25"  
**NET WEIGHT (OZ):** 7.4  
**COMPATIBLE:** WEAVER/PICATINNY & NAR  
 STANAG 4694 RAILS  
**FINISH:** BLACK ANODIZED AIRCRAFT  
 GRADE ALUMINUM



**MODEL: PJNG02**  
**DESCRIPTION:** MOSIN NAGANT SLING HEAVY DUTY  
**LENGTH:** 20"  
**NET WEIGHT (OZ):** 4.9  
**COMPATIBLE:** FITS MOSIN NAGANT RIFLE & CARBINES  
**FINISH:** MILITARY GREEN WEB CANVASS/LEATHER





**MODEL: PJNG04**  
**DESCRIPTION:** MOSIN NAGANT CLEANING KIT  
**LENGTH:** 5.25"  
**NET WEIGHT (OZ):** 3.8  
**FEATURES:** MUZZLE PROTECTOR, CLEANING ROD JAG, CLEANING BRUSH, FIRING PIN DEPTH GAUGE/WITH SCREWDRIVER TIP(FLAT) AND CANVAS POUCH



**MODEL: PJNG05**  
**DESCRIPTION:** MOSIN NAGANT BUTTPAD  
**COMPATIBLE:** ALL MOSIN NAGANT RIFLE MODELS  
**FEATURES:** REDUCES RECOIL BY 40%. USE EXISTING BUTTPATE SCREWS  
**FINISH:** NON SLIP-RUBBER



**MODEL: PJNG06**  
**DESCRIPTION:** MOSIN NAGANT CHAMBER BRUSH  
**COMPATIBLE:** 7.62X54  
**FEATURES:** 8-32 THREAD TO FIT STANDARD RODS SILVER BRISTLES/ STANLESS STEEL TUFTS



**MODEL: PJNG07**  
**DESCRIPTION:** MOSIN NAGANT CLEANING ROD  
**LENGTH:** 18.5"  
**NET WEIGHT (OZ):** 26.5  
**COMPATIBLE:** M38, 44, 91/59, 91/38 & T53  
**FEATURES:** 18 1/2 " LENGTH, OPEN SLOT FOR CLEANING CLOTH  
**FINISH:** ALL STEEL CONSTRUCTION



**MODEL: PJPHG**  
**DESCRIPTION:** VERTICAL HAND GRIP  
**LENGTH:** 4.25"  
**NET WEIGHT (OZ):** 7  
**COMPATIBLE:** WEAVER/PICATINNY & NAR STANAG 4694 RAILS  
**FINISH:** POLYMER/BLACK



**MODEL: PJHG2**  
**DESCRIPTION:** TACTICAL VERTICAL HAND GRIP/SHORT  
**LENGTH:** 3"  
**NET WEIGHT (OZ):** 3  
**COMPATIBLE:** WEAVER/PICATINNY & NAR STANAG 4694 RAILS  
**FINISH:** BLACK ANODIZED AIRCRAFT GRADE ALUMINUM/STEEL



**MODEL: PJRC**  
**DESCRIPTION:** RAIL COVERS/12 PIECES  
**COMPATIBLE:** WEAVER/PICATINNY & NAR STANAG 4694 RAILS  
**FINISH:** NON SLIP RUBBER



**MODEL: PJSSL**  
**DESCRIPTION:** AK/SKS SLING  
**LENGTH:** 20.5"  
**NET WEIGHT (OZ):** 3.6  
**FEATURES:** LEATHER TAB/ADJUSTABLE  
**FINISH:** CLOTH CANVASS/GREEN



**MODEL: PJSVG**  
**DESCRIPTION:** AR VERTICLE FOREGRIP W/BATTERY COMPARTMENT (POLYMER)  
**LENGTH:** 3.25"  
**NET WEIGHT (OZ):** 2.9  
**FEATURES:** SINGLE BATTERY COMPARTMENT  
**FINISH:** POLYMER



**MODEL: PJTW1**  
**DESCRIPTION:** AR15 STOCK COMBO WRENCH  
**LENGTH:** 13"  
**NET WEIGHT (OZ):** 20  
**FEATURES:** INSTALL/DISSASSEMBLE NUTS, COMPENSATORS AND TUBES  
**FINISH:** ALL STEEL CONSTRUCTION



**MODEL: PJTW2**  
**DESCRIPTION:** AR15 STOCK COMBO WRENCH  
**LENGTH:** 12.5"  
**NET WEIGHT (OZ):** 20  
**FEATURES:** CAR STOCK W/3 POINT CASTLE NUT/LOCKING RING  
**FINISH:** ALL STEEL CONSTRUCTION



**MODEL: PJTW3**  
**DESCRIPTION:** AR15/M4 STOCK COMBO WRENCH  
**LENGTH:** 12.5"  
**NET WEIGHT (OZ):** 21  
**FEATURES:** CAR STOCK W/3 POINT CASTLE NUT/LOCKING RING  
**FINISH:** ALL STEEL CONSTRUCTION



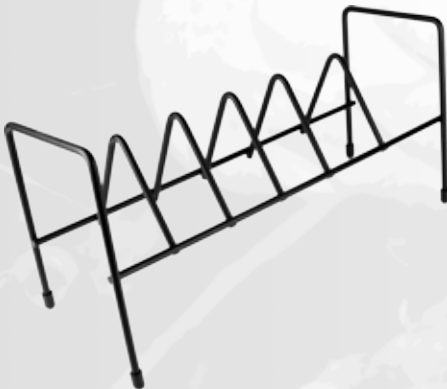
**MODEL: PM1A**  
**DESCRIPTION:** M14 BUTTPAD  
**LENGTH:** 3.75"  
**NET WEIGHT (OZ):** 1.9"  
**FEATURES:** ADDS AN ADDITIONAL 1" TO RIFLE/NO TAPPING OR DRILLING NEEDED  
**FINISH:** NON SLIP-RUBBER



**MODEL: PM4**  
**DESCRIPTION:** M4 BUTTPAD  
**LENGTH:** 5.5"  
**NET WEIGHT (OZ):** 4.7  
**FEATURES:** 1" RIFLE EXTENSION/SLIP ON DESIGN/NO TAPPING OR DRILLING NEEDED  
**FINISH:** NON SLIP-RUBBER



**MODEL: PMAK**  
**DESCRIPTION:** AK BUTTPAD  
**LENGTH:** 5"  
**NET WEIGHT (OZ):** 3.9  
**FEATURES:** 1" RIFLE EXTENSION/USE EXISTING PLATE SCREWS NO TAPPING OR DRILLING NEEDED  
**FINISH:** NON SLIP-RUBBER



**MODEL: PR01B**  
**DESCRIPTION:** 6 UNIT PISTOL ORGANIZER RACK  
**WIDTH:** 3.75"  
**LENGTH:** 11.5"  
**NET WEIGHT (OZ):** 13.8  
**FEATURES:** 6 SLOTS & NON-SLIP RUBBER LEGS  
**FINISH:** BLACK/SCRATCH RESISTANT



**MODEL: PR02B**  
**DESCRIPTION:** 6 UNIT PISTOL ORGANIZER RACK W/2 MAGAZINE SLOTS  
**WIDTH:** 3.75"  
**LENGTH:** 16.25"  
**NET WEIGHT (OZ):** 20.2  
**FEATURES:** 8 SLOTS & NON-SLIP RUBBER LEGS  
**FINISH:** BLACK/SCRATCH RESISTANT



**MODEL: RSU**  
**DESCRIPTION:** AR15 FRONT SIGHT SLING ADAPTOR  
**FEATURES:** INSTALLS ONTO ALL MIL-SPEC BARRELS/ATTACHES TO LEFT OR RIGHT SIDE/FOR TACTICAL SLINGS  
**FINISH:** MATTE BLACK/AIRCRAFT GRADE ALUMINUM



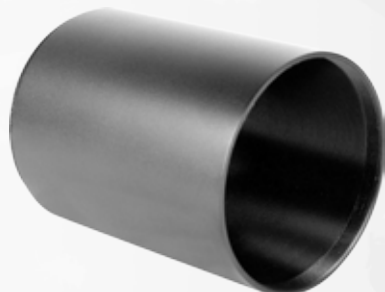
**MODEL: CB01**  
 DESCRIPTION: PISTOL CASE/BLACK  
 LENGTH: 12"  
 NET WEIGHT (OZ): 4.6  
 FEATURES: HEAVY DUTY D RING FOR LOCKABILITY  
 FINISH: FAUX SUEDE/PADDED INTERIOR



**MODEL: CG01**  
 DESCRIPTION: PISTOL CASE/GREEN  
 LENGTH: 12"  
 NET WEIGHT (OZ): 4.6  
 FEATURES: HEAVY DUTY D RING FOR LOCKABILITY  
 FINISH: FAUX SUEDE/PADDED INTERIOR



**MODEL: CT010**  
 DESCRIPTION: CLAY THROWER  
 LENGTH: 18.5"  
 NET WEIGHT (OZ): 7.5  
 FINISH: ORANGE



**MODEL: JA62450B**  
 DESCRIPTION: 3" SCOPE SUNSHADE  
 LENGTH: 3.25"  
 NET WEIGHT (OZ): 2  
 COMPATIBLE: ALSO FITS 4-16X50 AND 10-40X50  
 FINISH: MATTE BLACK



**MODEL: UGCK**  
 DESCRIPTION: UNIVERSAL 30 PIECE GUN CLEANING KIT  
 2"  
 WIDTH: 11.75"  
 LENGTH: 36  
 NET WEIGHT (OZ): ALUMINUM CASE, BRASS RODS, PATCHES, BORE BRUSHES, CLEANING SWABS, UNIVERSAL HANDLE & BRASS ACCESSORY ADAPTORS



**MODEL: PJM1S**  
 DESCRIPTION: M1 GARAND SLING  
 LENGTH: 20"  
 NET WEIGHT (OZ): 4.8  
 FEATURES: HEAVY DUTY COTTON/ OVER THE SHOULDER DESIGN/TAN



**MODEL: CGL01**  
 DESCRIPTION: SIDEWINDER CABLE GUN LOCK (DOJ APPROVED)  
 LENGTH: 15"  
 NET WEIGHT (OZ): 4.9  
 FEATURES: LOCK HAS 4 TUMBLERS  
 FINISH: RUBBER COVERED STEEL CABLE



**MODEL: CGL01S**  
 DESCRIPTION: SIDEWINDER CABLE GUN LOCK-SHORT (DOJ APPROVED)  
 LENGTH: 10"  
 NET WEIGHT (OZ): 4.5  
 FEATURES: LOCK HAS 4 TUMBLERS  
 FINISH: RUBBER COVERED STEEL CABLE



**MODEL: DCART**  
 DESCRIPTION: DEER CART/GAME HAULER  
 LENGTH: 42"  
 NET WEIGHT: 20 LBS.  
 FEATURES: EASY INSTALLATION, NO TOOL ASSEMBLY REQUIRED  
 COMES WITH 3 BUCKLE STRAPS & SOLID 13.5" RUBBER TIRES  
 FINISH: MATTE BLACK/METAL





**MODEL: PJBS12G**

DESCRIPTION: 12 GAUGE CARTRIDGE  
POWER OUTPUT: RED LASER 5mW  
WAVELENGTH: 635/655NM  
BATTERY: LR44



**MODEL: PJBS20G**

DESCRIPTION: 20 GAUGE CARTRIDGE  
POWER OUTPUT: RED LASER 5mW  
WAVELENGTH: 635/655NM  
BATTERY: LR44



**MODEL: PJBS50B**

DESCRIPTION: 50 GAUGE CARTRIDGE  
POWER OUTPUT: RED LASER 5mW  
WAVELENGTH: 635/655NM  
BATTERY: CR2 3V 750 mAH



**MODEL: PJBS50G**

DESCRIPTION: 50 GAUGE CARTRIDGE  
POWER OUTPUT: GREEN LASER 5mW  
WAVELENGTH: 635/655NM  
BATTERY: LR44



**MODEL: PJBS223**

DESCRIPTION: .223 REM CARTRIDGE  
POWER OUTPUT: RED LASER 5mW  
WAVELENGTH: 635/655NM  
BATTERY: LR44



**MODEL: PJBS308**

DESCRIPTION: .243/.308 WIN/7MM-08 REM CARTRIDGE  
POWER OUTPUT: RED LASER 5mW  
WAVELENGTH: 635/655NM  
BATTERY: LR44



**MODEL: PJBS300W**

DESCRIPTION: .300 WIN CARTRIDGE  
POWER OUTPUT: RED LASER 5mW  
WAVELENGTH: 635/655NM  
BATTERY: LR44



**MODEL: PJBS3030W**

DESCRIPTION: .30-06/.25-06/270 CARTRIDGE  
POWER OUTPUT: RED LASER 5mW  
WAVELENGTH: 635/655NM  
BATTERY: LR44



**MODEL: PJBS303BR**  
 DESCRIPTION: .303 BRITISH CARTRIDGE  
 POWER OUTPUT: RED LASER 5mW  
 WAVELENGTH: 635/655NM  
 BATTERY: LR44



**MODEL: PJBS3006**  
 DESCRIPTION: .30-06/25-06/270 CARTRIDGE  
 POWER OUTPUT: RED LASER 5mW  
 WAVELENGTH: 635/655NM  
 BATTERY: LR44



**MODEL: PJBS7MM**  
 DESCRIPTION: 7MM CARTRIDGE  
 POWER OUTPUT: RED LASER 5mW  
 WAVELENGTH: 635/655NM  
 BATTERY: LR44



**MODEL: PJBS8MM**  
 DESCRIPTION: 8MM MAUSER CARTRIDGE  
 POWER OUTPUT: RED LASER 5mW  
 WAVELENGTH: 635/655NM  
 BATTERY: LR44



**MODEL: PJBS9MM**  
 DESCRIPTION: 9MM PISTOL CARTRIDGE  
 POWER OUTPUT: RED LASER/5mW  
 WAVELENGTH: 635/655NM  
 BATTERY: LR44



**MODEL: PJBS762/39**  
 DESCRIPTION: 7.62X39MM CARTRIDGE  
 POWER OUTPUT: RED LASER 5mW  
 WAVELENGTH: 635/655NM  
 BATTERY: LR44



**MODEL: PJBS762/54**  
 DESCRIPTION: 7.62X54MM CARTRIDGE  
 POWER OUTPUT: RED LASER 5mW  
 WAVELENGTH: 635/655NM  
 BATTERY: LR44



**MODEL: BPAK**  
**DESCRIPTION:** AK/SKS BIPOD  
**HEIGHT:** 8.5"-13.5"  
**NET WEIGHT (OZ):** 15.5  
**FEATURES:** CLAMPS DIRECTLY TO AK/SKS BARREL  
W/ADJUSTABLE LEGS/RETRACTABLE/  
COLLAPSIBLE BUTTON  
**FINISH:** MATTE BLACK/AIRCRAFT GRADE  
ALUMINUM



**MODEL: BPARS**  
**DESCRIPTION:** AR HANDGUARD RAIL BIPOD/STANDARD  
**HEIGHT:** 6.8"-9.4"  
**NET WEIGHT (OZ):** 16  
**FEATURES:** CLAMPS DIRECTLY TO HANDGUARD RAIL  
W/ADJUSTABLE LEGS/RETRACTABLE/  
COLLAPSIBLE BUTTON  
**FINISH:** MATTE BLACK/AIRCRAFT GRADE  
ALUMINUM



**MODEL: BPARSS**  
**DESCRIPTION:** AR HANDGUARD RAIL BIPOD/SHORT  
**HEIGHT:** 6.5"-9"  
**NET WEIGHT (OZ):** 9.2  
**FEATURES:** CLAMPS DIRECTLY TO HANDGUARD RAIL  
W/ADJUSTABLE LEGS/RETRACTABLE/  
COLLAPSIBLE BUTTON  
**FINISH:** MATTE BLACK/AIRCRAFT GRADE  
ALUMINUM



**MODEL: BPSKSL**  
**DESCRIPTION:** SKS BIPOD MOUNT W/BAYONET/LONG  
**HEIGHT:** 9.5"-13.8"  
**NET WEIGHT (OZ):** 12.5  
**FEATURES:** CLAMPS DIRECTLY TO BAYONET LUG  
W/ADJUSTABLE LEGS/RETRACTABLE/  
COLLAPSIBLE BUTTON  
**FINISH:** MATTE BLACK/AIRCRAFT GRADE  
ALUMINUM





**MODEL: BPSKSS**  
**DESCRIPTION:** SKS BIPOD MOUNT W/SHORT  
**HEIGHT:** 8.3"-11.5"  
**NET WEIGHT (OZ):** 8.9  
**FEATURES:** CLAMPS DIRECTLY TO BAYONET LUG  
W/ADJUSTABLE LEGS/RETRACTABLE/  
COLLAPSIBLE BUTTON  
**FINISH:** MATTE BLACK/AIRCRAFT GRADE  
ALUMINUM



**MODEL: BPUNIS**  
**DESCRIPTION:** UNIVERSAL BIPOD/FITS MOST  
BARRELS  
**HEIGHT:** 8.5"-13.5"  
**NET WEIGHT (OZ):** 15  
**FEATURES:** CLAMPS DIRECTLY BARRELS W/  
ADJUSTABLE LEGS/RETRACTABLE/  
COLLAPSIBLE BUTTON  
**FINISH:** MATTE BLACK/AIRCRAFT GRADE  
ALUMINUM



**MODEL: BPM1G**  
**DESCRIPTION:** M1 GARAND STEEL BIPOD  
**HEIGHT:** 9"-13"  
**NET WEIGHT (OZ):** 22.5  
**FEATURES:** CLAMPS DIRECTLY TO GAS BLOCK  
CYLINDER W/ADJUSTABLE LEGS/  
RETRACTABLE/COLLAPSIBLE BUTTON  
**FINISH:** STEEL PARKERIZED



**MODEL: BPM14**  
**DESCRIPTION:** M14 REPLICA USGI M2 BIPOD  
**HEIGHT:** 9"-13"  
**NET WEIGHT (OZ):** 22.5  
**FEATURES:** CLAMPS DIRECTLY TO GAS BLOCK &  
BARREL W/ADJUSTABLE LEGS/  
RETRACTABLE/COLLAPSIBLE BUTTON  
**FINISH:** STEEL PARKERIZED



**MODEL: BPG3**  
 DESCRIPTION: M2 REPLIC M1919 USGI TRIPOD  
 HEIGHT: 30"  
 NET WEIGHT (LBS): 13  
 FEATURES: OPENS TO 34 1/2 X 34 1/2 X 30H  
 FINISH: STEEL PARKERIZED



**MODEL: BPG3-TE**  
 DESCRIPTION: M2 M1919 TRANSVERSING & ELEVATION  
 HEIGHT: 47.2  
 NET WEIGHT (OZ): 47.2  
 COMPATIBLE: M2 1919 TRIPOD  
 FINISH: ALL STEEL CONSTRUCTION



**MODEL: BPG3-P**  
 DESCRIPTION: .30 CAL/.50 CAL PINTLE  
 HEIGHT: 19.2  
 NET WEIGHT (OZ): 19.2  
 COMPATIBLE: .30 CAL & .50 CAL TRIPOD  
 FINISH: ALL STEEL CONSTRUCTION



## CONTENTS

- 1 SCOPES
- 11 RED-DOTS
- 15 SPOTTING SCOPES
- 17 LASERS
- 19 FLASHLIGHTS
- 21 LASER/FLASHLIGHT COMBOS
- 22 MUZZLE BRAKES
- 25 RINGS
- 28 MOUNTS
- 46 ACCESSORIES
- 53 LASER BORE SIGHTERS
- 55 BIPODS
- 58 WARRANTY INFO





# 2012 CATALOG



[WWW.AIMSPORTSINC.COM](http://WWW.AIMSPORTSINC.COM)

AIM SPORTS INC.  
5095 Walnut Grove Ave.  
San Gabriel, CA 91776  
Tel: (855) ASK-4AIM - (855) 275-4246  
Fax: (626) 286-5095  
Email: [sales@aimsportsinc.com](mailto:sales@aimsportsinc.com)



*Designed and Printed in the U.S.A.*

## ABOUT US

AIM Sports inc. was established in 2007. We first started by working on several O.E.M. projects for many major companies. During that time we saw an increase in dealer/distributor request for wholesale items. Since then we have produced and manufactured scopes and accessories for the hunting/shooting industry under the AIM brand. From a simple A2 sight adjustment tool to a heavy duty deer cart for when you need to bring home your prized trophy; AIM has you covered.

In all honesty, when we first started with our AIM brand of items we had our challenges. However we understood to be successful in this industry, we had to listen to our customer's honest and sometimes frustrating feedback. We learned quickly. When a product was not acceptable, going back to the drawing board was something we were not afraid to do. To this very day we continue to improve and find better ways to develop new products.

Our Research and Development team with over 10 years of experience is what continues to make our products more superior than before. They will not stop working until they are completely satisfied with the results. As avid shooters, they will not develop an item they are not willing to put on their own personal weapons. With their help and hard work we will soon go over 300 products; but don't take our word for it, let our actions show you what AIM Sports has in store for 2011.

We are also proud to introduce our new railing/mounting systems that will meet the new NATO STANAG 4694 (NAR). Please contact us for more information on these new items.

## WHY AIM?

- Orders placed are shipped within 24 hours
- Limited lifetime warranty (some restrictions may apply)
- Drop ship serviced offered at very low handling fees; never going above 3%. Let us be your virtual warehouse
- O.E.M. services offered. Production completed between 30-45 days after sample approval
- Customer service available M-F from 8:00 a.m.-5:00 p.m. P.S.T.
- All new scopes are manufactured with etched glass, fog-proof, shockproof, and Nitrogen filled.
- We own our own factory where a vast number of our items are produced
- Mounts and rails manufactured with T6061 Aircraft Grade Aluminum
- Vast majority of our products are produced to fit weaver/picatinny MIL-STD 1913/STANAG

Customer service and constant dedication to our customers is what we strive for each and every day. Our dedication to all our customers remains priority #1. Ask one of our staff members about what possible services AIM Sports can provide for you. We still stand behind our motto that we introduced 4 years ago...

AIM..."you name it, we'll make it"

From our staff: Amber C. VP.

Jim B.	Richard L.	Stephanie V.	Michael F.
Jack L.	John C.	Lucy W.	Ken V.

A final thank you to all our customers for your constant trust, dedication and commitment during our first few years, we are forever grateful.





## AIM SPORTS INC. WARRANTY

The Aim Sports Inc. Limited Lifetime Warranty covers against defects in materials and workmanship. Aim Sports Inc. will replace or repair defective product(s) upon inspection by our technical staff. Defects or damage from abnormal use, improper storage, unauthorized modifications, unauthorized repair, misuse, neglect, abuse, alteration or improper installation will void the product(s) warranty and eligibility. Limited Lifetime Warranty covers item(s) purchased from an authorized dealer, within the first 90 days of ownership, with proof of receipt purchase (duplications only). Aim Sports Inc. will waive the \$10.00 shipping and handling fee for returned product(s). Returned items over 90 days of ownership or no proof of receipt purchase prior to 90 days, a \$10.00 fee will apply to cover shipping and handling charges. Make checks or money orders payable to: Aim Sports Inc.

### Returning Item

Before shipping item(s) back to Aim Sports Inc. a Return Authorization Number (RA#) must be obtained by calling Technical Assistance. All return item(s) must be received with RA#. There will be a delay in processing for all item(s) received without an RA#.

If you experience any problems with our products return it, with explanation of the problem and mail it to:

AIM SPORTS INC.  
5095 Walnut Grove Ave  
San Gabriel, CA 91776

Item Number: \_\_\_\_\_  
Purchased Date: \_\_\_\_\_  
Dealer/Distributor: \_\_\_\_\_  
Your Name: \_\_\_\_\_  
Address: \_\_\_\_\_  
City: \_\_\_\_\_ St: \_\_\_\_\_ Zip: \_\_\_\_\_  
Brief Remark/Description of Problem: \_\_\_\_\_  
\_\_\_\_\_  
\_\_\_\_\_  
\_\_\_\_\_  
Return Authorization Number: \_\_\_\_\_

### FOR TECHNICAL ASSISTANCE CONTACT US:

TELEPHONE: 626 286-0600  
E-MAIL: [RMA@AIMSPORTSINC.COM](mailto:RMA@AIMSPORTSINC.COM)

WE WILL REPLACE, OR REPAIR ANY DEFECTIVE ITEM THAT IS PURCHASED  
OR MANUFACTURED BY AIM SPORTS INC.

[WWW.AIMSPORTSINC.COM](http://WWW.AIMSPORTSINC.COM)